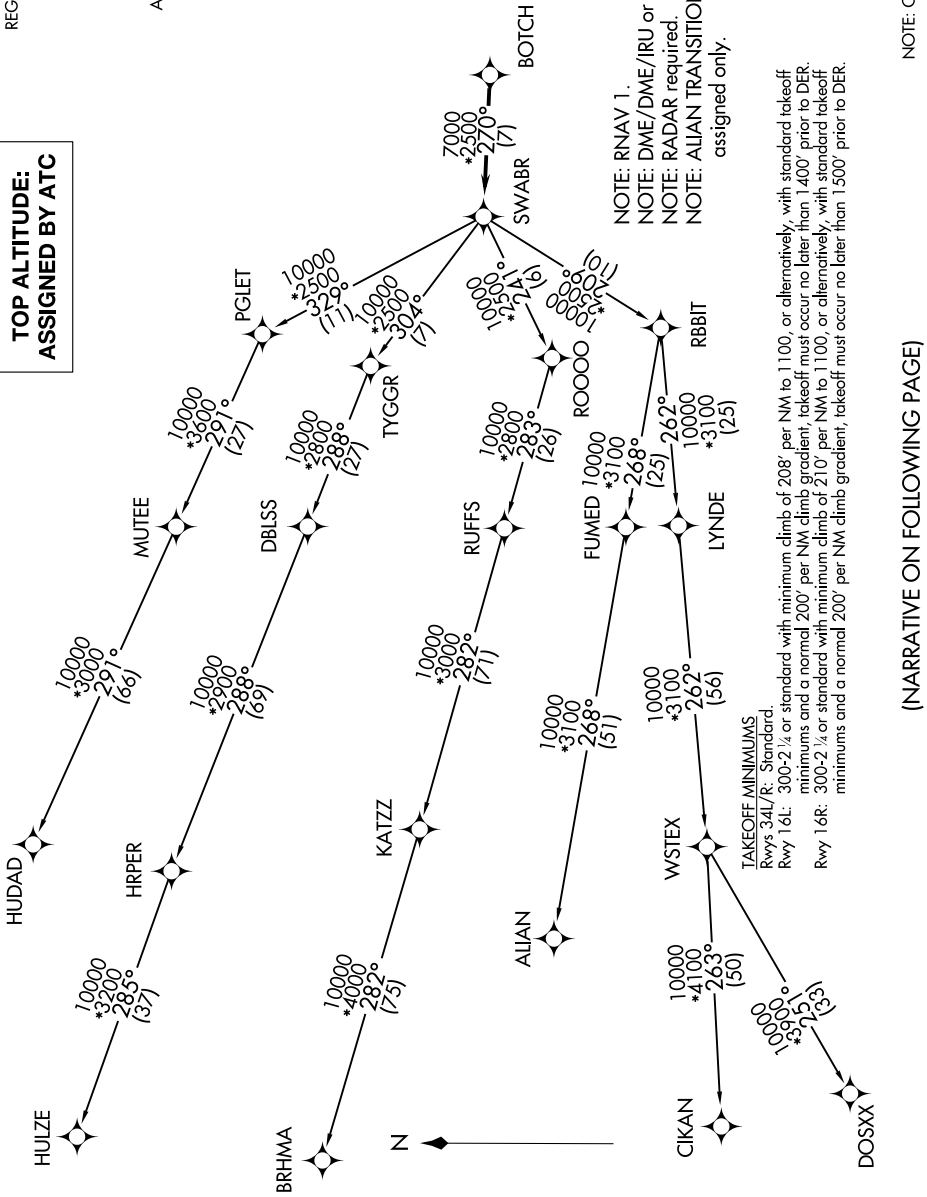
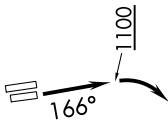


# SWABR SIX DEPARTURE (RNAV)

### TOP ALTITUDE: ASSIGNED BY ATC

REGIONAL DEP CON  
118.1 306.95  
ATIS  
126.925  
CLINC DEL  
128.725  
GND CON  
132.65 306.2  
ALLIANCE TOWER  
135.15 257.9



NOTE: RNAV 1.  
 NOTE: DME/DME/IRU or GPS required.  
 NOTE: RADAR required.  
 NOTE: ALIEN TRANSITION: ATC assigned only.

TAKEOFF MINIMUMS  
 Rwy 34L/R: Standard.  
 Rwy 16L: 300-2 1/4 or standard with minimum climb of 208' per NM to 1100, or alternatively, with standard takeoff minimums and a normal 200' per NM climb gradient, takeoff must occur no later than 1400' prior to DER.  
 Rwy 16R: 300-2 1/4 or standard with minimum climb of 210' per NM to 1100, or alternatively, with standard takeoff minimums and a normal 200' per NM climb gradient, takeoff must occur no later than 1500' prior to DER.

NOTE: Chart not to scale.

(NARRATIVE ON FOLLOWING PAGE)

SC-2, 10 SEP 2020 to 08 OCT 2020

SC-2, 10 SEP 2020 to 08 OCT 2020