

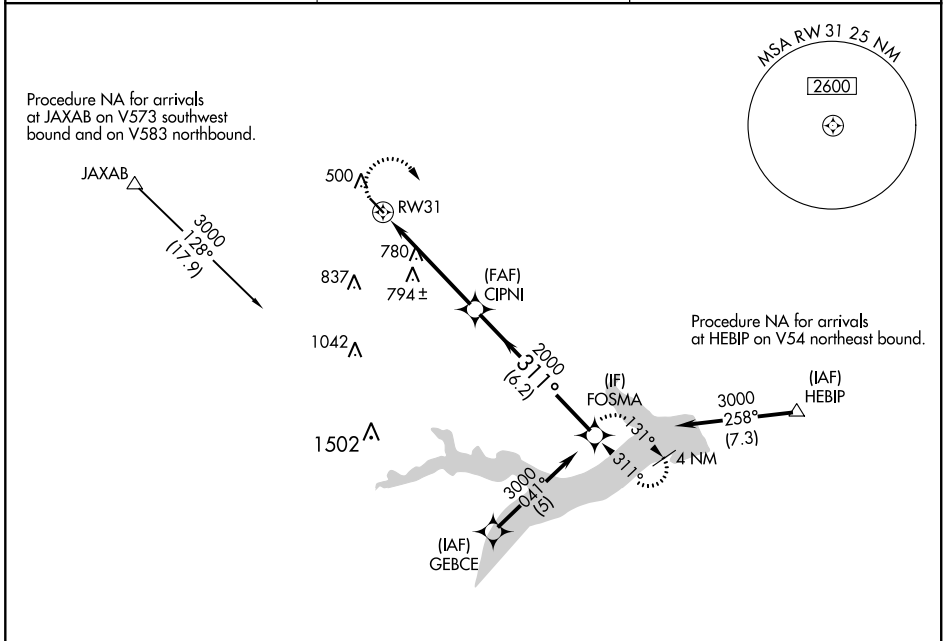
APP CRS 311°	Rwy Idg 3900
	TDZE 412
	Apt Elev 412

RNAV (GPS) RWY 31

FRANKLIN COUNTY (F53)

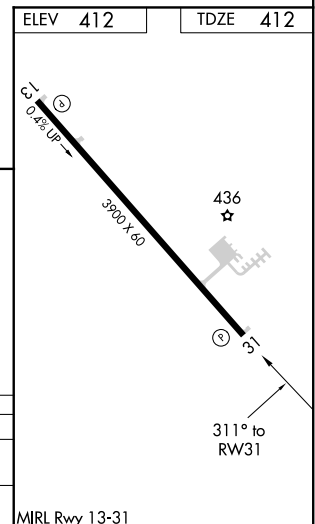
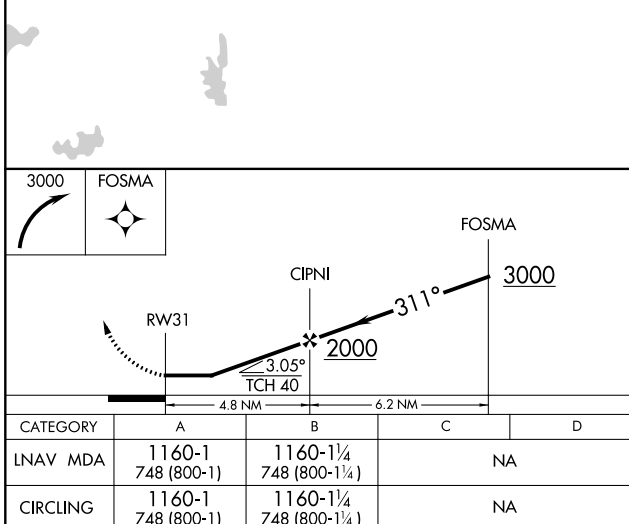
RNP APCH:	<p>⚠ Circling Rwy 13 NA at night. Rwy 31 helicopter visibility reduction below 3/4 SM NA. ⚠ NA Use Mount Pleasant Rgnl altimeter setting; when not received, procedure NA.</p>	MISSED APPROACH: Climbing right turn to 3000 direct FOSMA and hold.
-----------	---	---

OSA AWOS-3 119.775	FORT WORTH CENTER 132.025 360.75	UNICOM 123.0 (CTAF)
------------------------------	--	-------------------------------



SC-2, 10 SEP 2020 to 08 OCT 2020

SC-2, 10 SEP 2020 to 08 OCT 2020



ELEV 412	TDZE 412
----------	----------

CATEGORY	A	B	C	D
LNVA MDA	1160-1 748 (800-1)	1160-1¼ 748 (800-1¼)	NA	
CIRCLING	1160-1 748 (800-1)	1160-1¼ 748 (800-1¼)	NA	