

WAAS CH <b>45834</b> <b>W09A</b>	APP CRS <b>095°</b>	Rwy Idg TDZE Apt Elev	<b>4557</b> <b>9</b> <b>9</b>
--	------------------------	-----------------------------	-------------------------------------

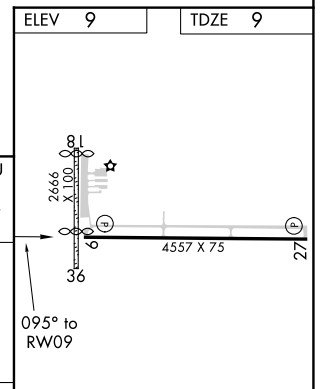
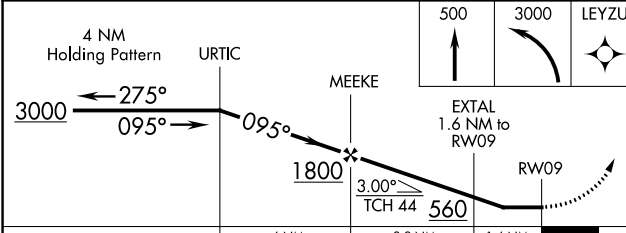
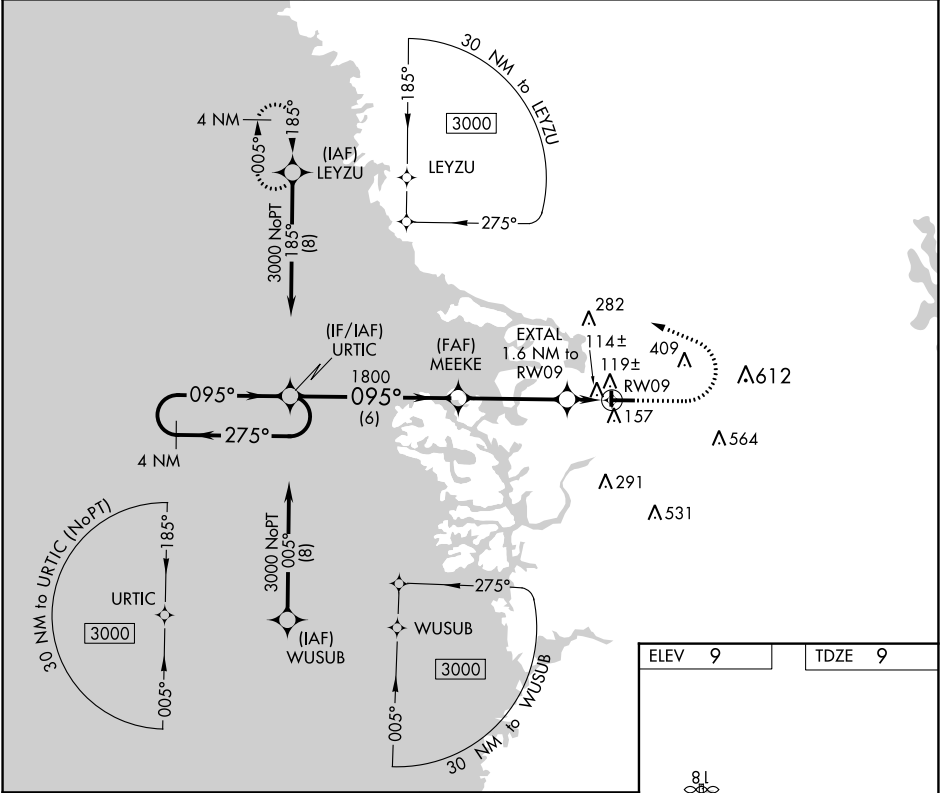
# RNAV (GPS) RWY 9

CRYSTAL RIVER-CAPTAIN TOM DAVIS FIELD (CGC)

**▼** Procedure NA at night. DME/DME RNP-0.3 NA. When local altimeter setting not received, use Ocala altimeter setting and increase all MDA 80 feet; increase LP Cat C/D visibility 3/8 mile, LNAV Cat C/D visibility 1/4 mile and Circling Cat C/D visibility 1/4 mile. Helicopter visibility reduction below 1 SM NA.

**▲** MISSED APPROACH: Climb to 500 then climbing left turn to 3000 direct LEYZU and hold.

AWOS-3 <b>118,325</b>	JACKSONVILLE APP CON <b>118.6 251.15</b>	UNICOM <b>122.725 (CTAF) 0</b>
--------------------------	---	-----------------------------------



CATEGORY	A	B	C	D
LP MDA	380-1		371 (400-1)	
LNAV MDA	420-1	411 (500-1)	420-1 1/8	411 (500-1 1/8)
<b>C</b> CIRCLING	460-1 451 (500-1)	540-1 531 (600-1)	760-2 1/4 751 (800-2 1/4)	880-2 3/4 871 (900-2 3/4)

ELEV 9 TDZE 9

MIRL Rwy 9-27 **0**  
REIL Rlys 9 and 27 **0**

SE-3, 10 SEP 2020 to 08 OCT 2020

SE-3, 10 SEP 2020 to 08 OCT 2020