

WAAS CH 42506 W05A	APP CRS 051°	Rwy Idg TDZE Apt Elev	5001 235 236
--	------------------------	-----------------------------	---

RNAV (GPS) RWY 5

COOK COUNTY (15J)

RNP APCH.

⚠ NA Baro-VNAV NA. Use Moultrie altimeter setting; when not received, use Valdosta Rgnl altimeter setting and increase all DA 7 feet and all MDA 20 feet.

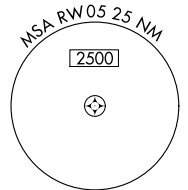
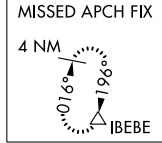
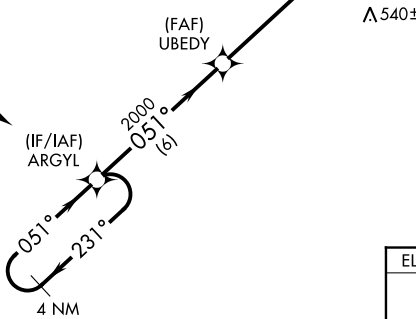
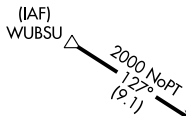
MISSED APPROACH: Climb to 3000 direct ZASIT and on track 016° to IBEBE and hold.

MGR AWOS-3PT
118.925

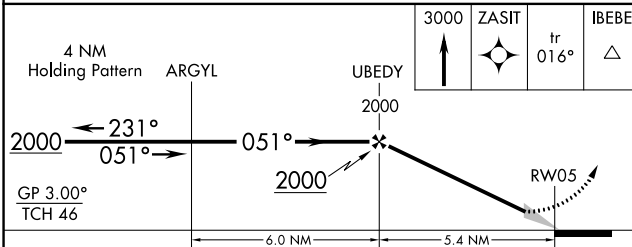
VALDOSTA APP CON*
126.6 285.6

UNICOM
122.8 (CTAF) 0

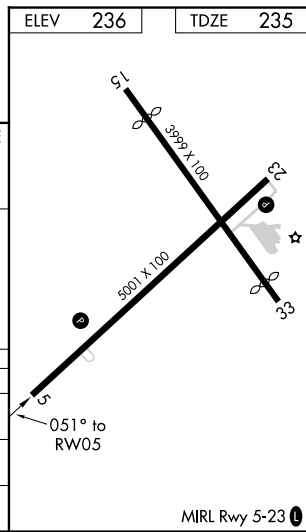
Procedure NA for arrivals at WUBSU on V537 northbound.



ELEV	236	TDZE	235
------	-----	------	-----



CATEGORY	A	B	C	D
LPV DA	536-1 301 (300-1)			
LNAV/VNAV DA	720-1 485 (500-1 1/2)			
LNAV MDA	840-1	605 (700-1)	840-1 1/4	605 (700-1 1/4)



MIRL Rwy 5-23 0

SE-4, 10 SEP 2020 to 08 OCT 2020

SE-4, 10 SEP 2020 to 08 OCT 2020