

WAAS CH <b>77914</b> <b>W18A</b>	APP CRS <b>177°</b>	Rwy Idg TDZE <b>104</b> Apt Elev <b>107</b>	<b>5000</b>
--	------------------------	---	-------------

# RNAV (GPS) RWY 18

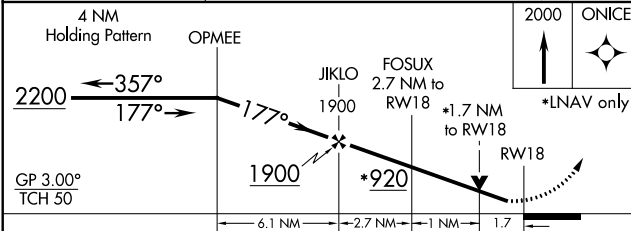
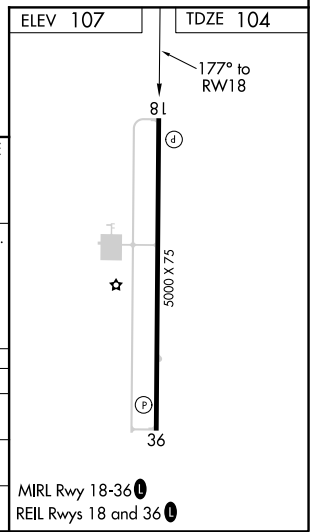
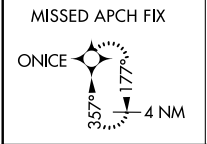
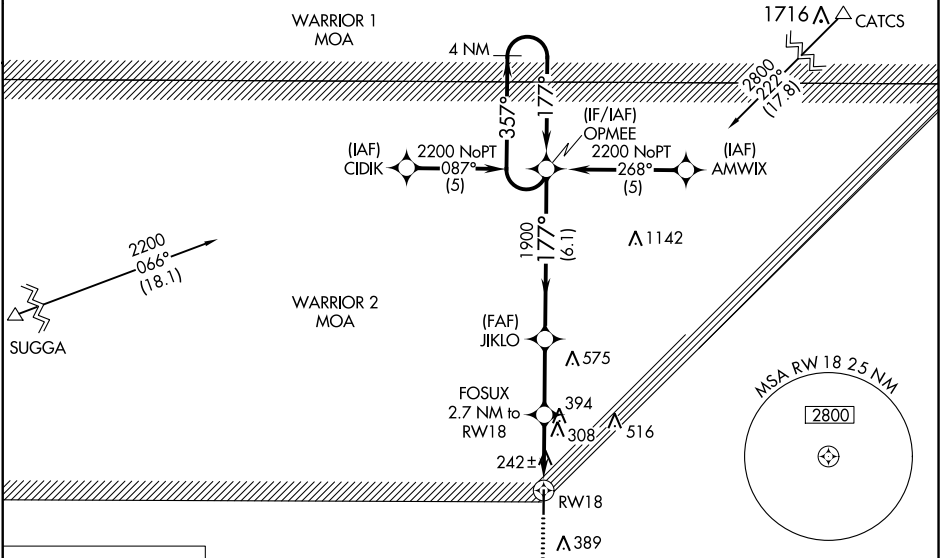
ALLEN PARISH (ACP)

**RNP APCH.**

**Baro-VNAV NA** when using Alexandria Intl altimeter setting. For uncompensated Baro-VNAV systems, LNAV/VNAV NA below -15°C or above 54°C. Rwy 18 helicopter visibility reduction below 3/4 SM NA. VDP NA when using Alexandria Intl altimeter setting. When local altimeter setting not received, use Alexandria Intl altimeter setting: increase all DA 84 feet; increase all MDA 100 feet; increase LPV and LNAV/VNAV all Cats visibility 1/2 SM and increase LNAV Cat C visibility 1/2 SM.

**MISSED APPROACH:** Climb to 2000 direct ONICE and hold.

AWOS-3PT <b>118.275</b>	POLK APP CON <b>123.7 261.3</b>	UNICOM <b>122.8 (CTAF) 0</b>
----------------------------	------------------------------------	---------------------------------



CATEGORY	A	B	C	D
LPV DA	515-1 1/2	411 (500-1 1/2)		NA
LNAV/VNAV DA	549-1 1/2	445 (500-1 1/2)		NA
LNAV MDA	700-1	596 (600-1)	700-1 3/4 596 (600-1 3/4)	NA

SC-4, 10 SEP 2020 to 08 OCT 2020

SC-4, 10 SEP 2020 to 08 OCT 2020