

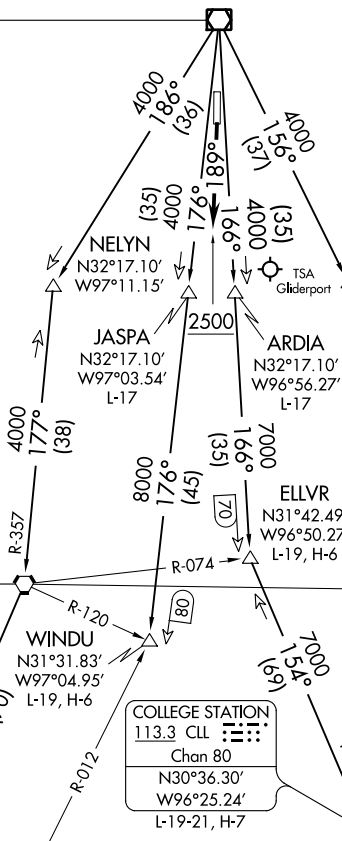
JOE POOL ONE DEPARTURE

GND CON
121.15
GRAND PRAIRIE TOWER ★
128.55 (CTAF)
REGIONAL DEP CON
135.975 379.9

TAKEOFF MINIMUMS

Rwy 17: Standard
Rwy 35: NA - ATC.

MAVERICK
113.1 TTT
Chan 78
N32°52.15'
W97°02.43'



WACO
115.3 ACT
Chan 100
N31°39.74'
W97°16.14'
L-19, H-6

WINDU
N31°31.83'
W97°04.95'
L-19, H-6

COLLEGE STATION
113.3 CLL
Chan 80
N30°36.30'
W96°25.24'
L-19-21, H-7

HOARY
N30°34.63'
W97°46.52'
L-19-21, H-7

CENTEX
112.8 CWK
Chan 75

SAN ANTONIO
116.8 SAT
Chan 115
N29°38.64'-W98°27.68'
L-19, H-7

TORNN
N31°31.22'
W96°30.88'
H-6

LEONA
110.8 LOA
Chan 45

BILEE
N31°09.87'
W96°22.89'
L-19-21, H-6

NAVASOTA
115.9 TNV
Chan 106

NOTE: RADAR and DME required.

(NARRATIVE ON FOLLOWING PAGE)

NOTE: Chart not to scale.

SC-2, 10 SEP 2020 to 08 OCT 2020

SC-2, 10 SEP 2020 to 08 OCT 2020

JOE POOL ONE DEPARTURE