

APP CRS	Rwy Idg	4001
355°	TDZE	588
	Apt Elev	588

AL-9209 (FAA)

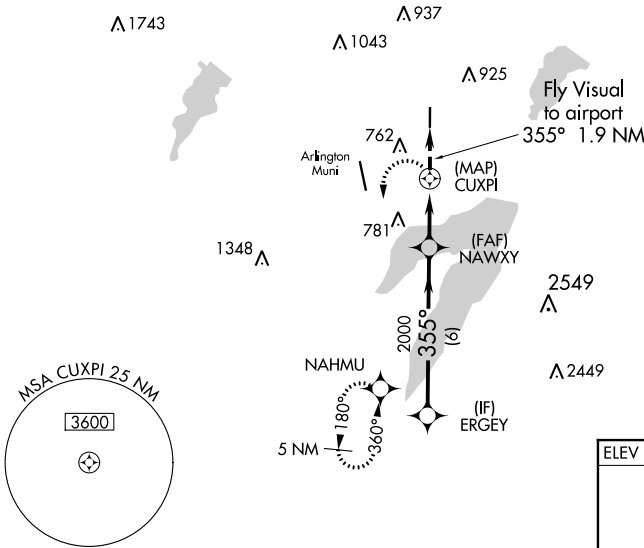
RNAV (GPS) RWY 35

GRAND PRAIRIE MUNI (GPM)

RNP APCH.		MISSED APPROACH: Climbing left turn to 2300 direct NAHMU and hold.		
If local altimeter setting not received, use Arlington Muni altimeter setting.				

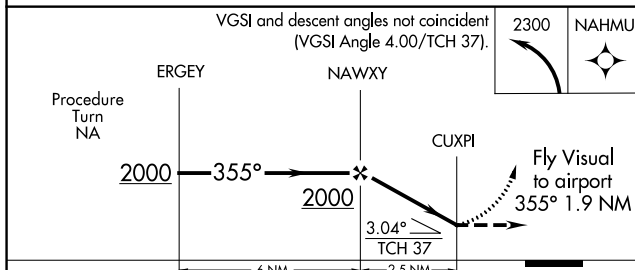
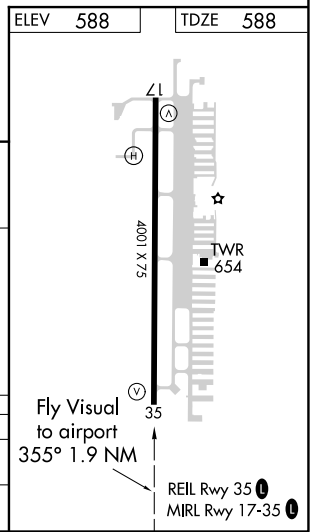
AWOS-3P 118.475	REGIONAL APP CON 135.975 379.9	GRAND PRAIRIE TOWER ★ 128.55 (CTAF) 0	GND CON 121.15	UNICOM 123.075
---------------------------	--	---	--------------------------	--------------------------

RADAR REQUIRED



SC-2, 10 SEP 2020 to 08 OCT 2020

SC-2, 10 SEP 2020 to 08 OCT 2020



CATEGORY	A	B	C	D
LNVA MDA	1020-2½	432 (500-2½)		NA
CIRCLING	NA			