

VOR/DME TTT 113.1 Chan 78	APP CRS 356°	Rwy Idg TDZE 589 Apt Elev 589	4001
---	------------------------	---	-------------

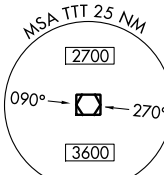
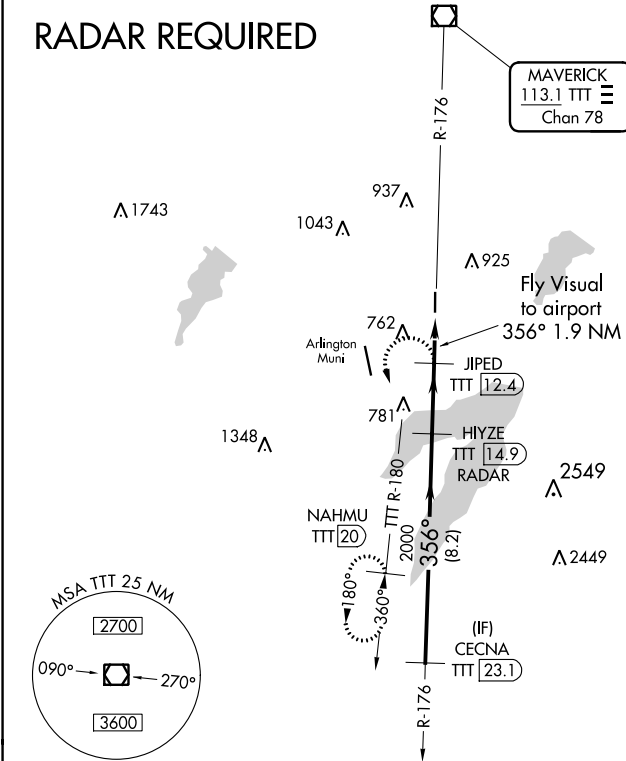
VOR/DME RWY 35

GRAND PRAIRIE MUNI (GPM)

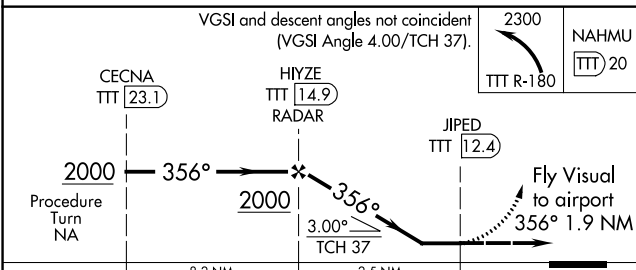
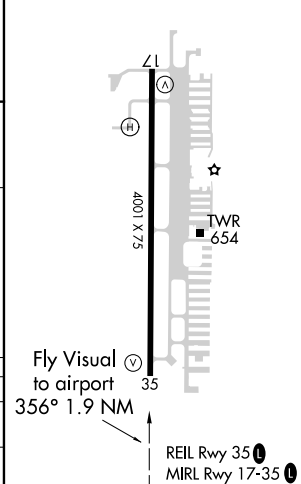
⚠ If local altimeter setting not received, use Arlington Muni altimeter setting. MISSED APPROACH: Climbing left turn to 2300 via TTT R-180 to NAHMU/20 DME and hold.

AWOS-3P 118.475	REGIONAL APP CON 135.975 379.9	GRAND PRAIRIE TOWER ★ 128.55 (CTAF) ①	GND CON 121.15	UNICOM 123.075
---------------------------	--	---	--------------------------	--------------------------

RADAR REQUIRED



ELEV 589	TDZE 589
----------	----------



CATEGORY	A	B	C	D
S-35	1040-2¼	451 (500-2¼)	NA	
CIRCLING	NA			

SC-2, 10 SEP 2020 to 08 OCT 2020

SC-2, 10 SEP 2020 to 08 OCT 2020