

APP CRS	Rwy Idg	3300
147°	TDZE	2
	Apt Elev	2

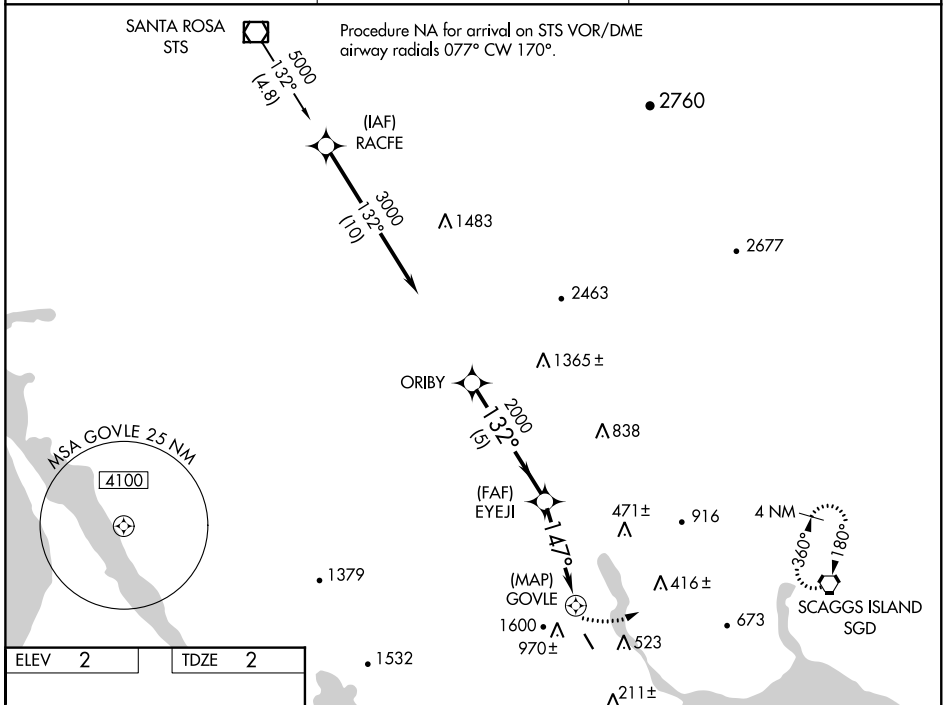
GPS RWY 13

GNOSS FIELD (DVO)

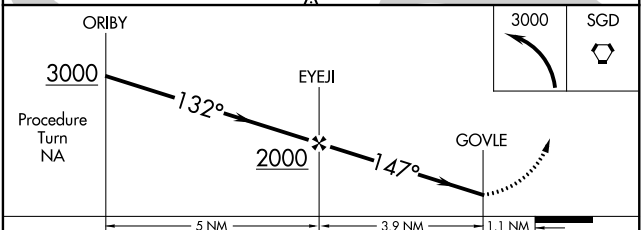
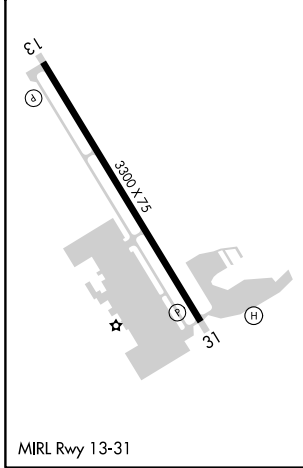
NA Circling NA west of Rwy 13-31. When local altimeter not received, use Napa altimeter setting and increase all MDAs 40 feet. If neither is received procedure is NA. Rwy 13 helicopter visibility reduction below 3/4 SM NA.

MISSED APPROACH: Climbing left turn to 3000 direct SGD VORTAC and hold.

AWOS-3P 120.675	OAKLAND CENTER 127.8 353.5	UNICOM 123.075 (CTAF)
----------------------------------	---	--



ELEV	2	TDZE	2
------	---	------	---



CATEGORY	A	B	C	D
S-13	1000-1¼ 998 (1000-1¼)	1000-1½ 998 (1000-1½)		NA
CIRCLING	1000-1¼ 998 (1000-1¼)	1000-1½ 998 (1000-1½)		NA
NAPA ALTIMETER SETTING MINIMUMS				
S-13	1040-1¼ 1038 (1100-1¼)	1040-1½ 1038 (1100-1½)		NA
CIRCLING	1040-1¼ 1038 (1100-1¼)	1040-1½ 1038 (1100-1½)		NA

SW-2, 10 SEP 2020 to 08 OCT 2020

SW-2, 10 SEP 2020 to 08 OCT 2020