

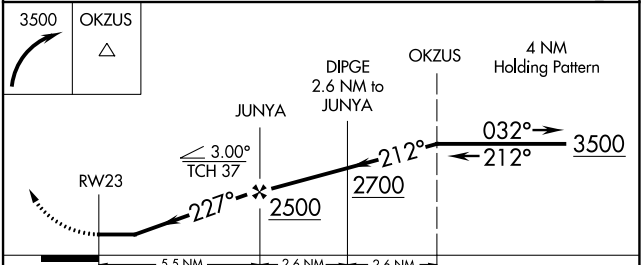
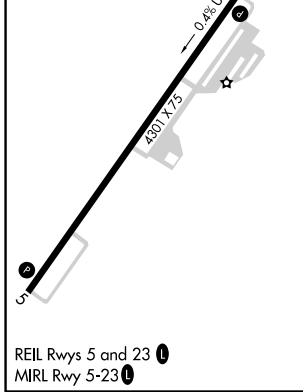
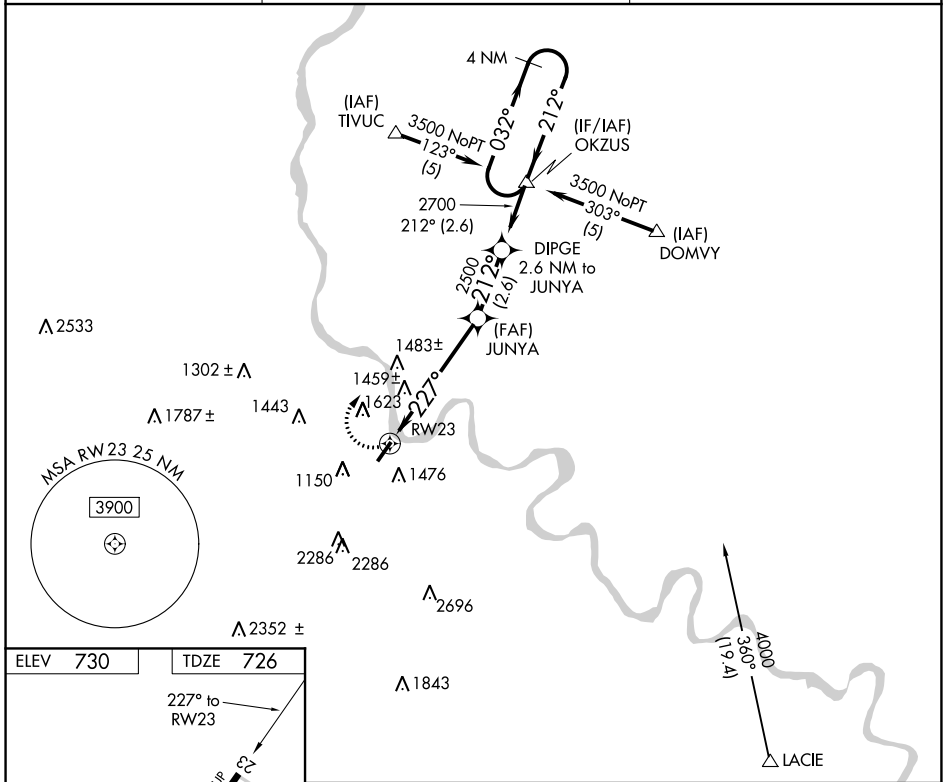
APP CRS 227°	Rwy Idg TDZE Apt Elev	4301 726 730
------------------------	-----------------------------	---

RNAV (GPS) RWY 23

BRADFORD COUNTY (N27)

<p>▼ Use Tri-Cities, NY altimeter setting. GPS or RNP-0.3 required. ▲ NA DME/DME RNP-0.3 NA. Night landing: RWY 5 NA. ❄️ -24°C Helicopter visibility reduction below ¾ SM NA.</p>	<p>MISSED APPROACH: Climbing right turn to 3500 direct OKZUS WP and hold.</p>
---	---

AWOS-3 119.925	BINGHAMTON APP CON 118.6 257.625	UNICOM 123.0 (CTAF) ①
--------------------------	--	---------------------------------



CATEGORY	A	B	C	D
LNAV MDA	1800-1¼ 1074 (1100-1¼)	1800-1½ 1074 (1100-1½)		NA
CIRCLING	2020-1¼ 1290 (1300-1¼)	2020-1½ 1290 (1300-1½)		NA

NE-4, 10 SEP 2020 to 08 OCT 2020

NE-4, 10 SEP 2020 to 08 OCT 2020