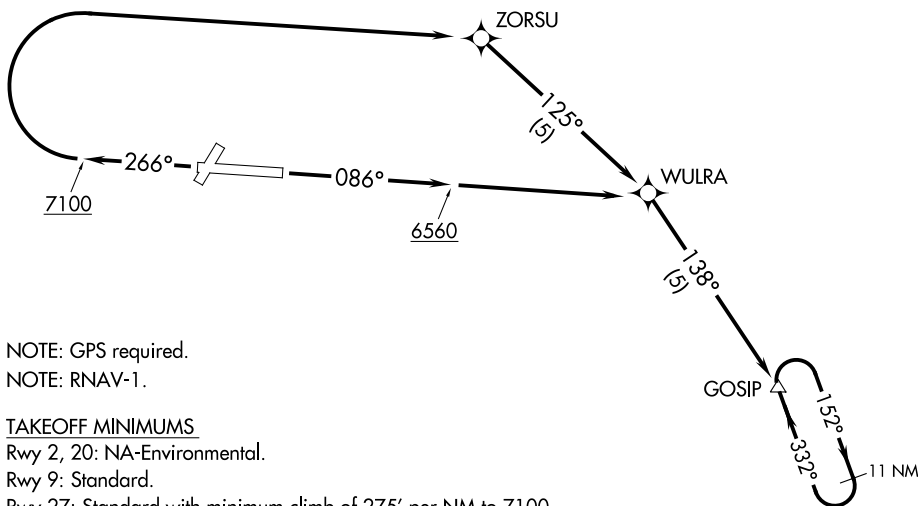


GOSIP ONE DEPARTURE (OBSTACLE) (RNAV)

DENVER APP CON
128.375 379.95



NOTE: GPS required.

NOTE: RNAV-1.

TAKEOFF MINIMUMS

Rwy 2, 20: NA-Environmental.

Rwy 9: Standard.

Rwy 27: Standard with minimum climb of 275' per NM to 7100.

TAKEOFF OBSTACLE NOTES

Rwy 9: Fence 70' from DER, 186' left of centerline, 12' AGL/6022' MSL. Tree 17' from DER, 210' right of centerline, 10' AGL/6020' MSL.

Rwy 27: Multiple buildings and poles beginning 162' from DER, 327' left of centerline, up to 44' AGL/6084' MSL. Pole 812' from DER, 386' left of centerline, 27' AGL/6077' MSL. Poles 1183' from DER, 402' left of centerline, 29' AGL/6079' MSL. Tanks and pump 150' from DER, 222' left of centerline, 27' AGL/6067' MSL.

NOTE: Chart not to scale.

DEPARTURE ROUTE DESCRIPTION

TAKEOFF RUNWAY 9: Climb on course 086° to 6560 then direct WULRA, then on depicted route to GOSIP, Thence

TAKEOFF RUNWAY 27: Climb on course 266° to 7100 then climbing right turn direct ZORSU, then on depicted route, Thence

. . . . all aircraft climb in GOSIP holding pattern to cross GOSIP at or above MEA/MCA for direction of flight before proceeding on course.

SW-1, 10 SEP 2020 to 08 OCT 2020

SW-1, 10 SEP 2020 to 08 OCT 2020