

WAAS CH <b>86831</b> <b>W27A</b>	APP CRS <b>266°</b>	Rwy Idg TDZE Apt Elev	<b>4712</b> <b>6037</b> <b>6056</b>
--	------------------------	-----------------------------	---

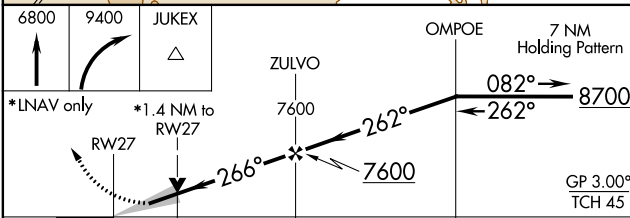
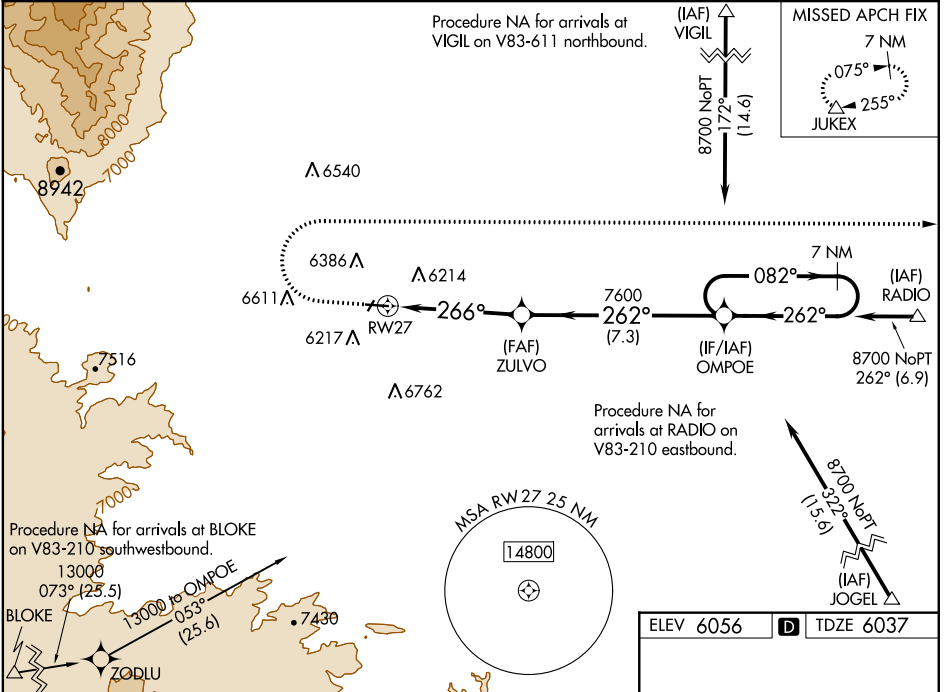
# RNAV (GPS) RWY 27

SPANISH PEAKS AIRFIELD (4V1)

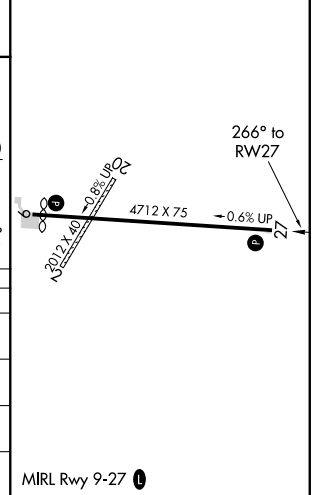
**⚠** For uncompensated Baro-VNAV systems, LNAV/VNAV NA below -26°C (-14°F) or above 48°C (118°F). DME/DME RNP-0.3 NA. When local altimeter setting not received, use Trinidad altimeter setting and increase all DA 119 feet and all MDA 120 feet; increase LPV all Cats visibility ¼ mile, increase LNAV/VNAV all Cats and LNAV Cats C/D visibility ⅓ mile. Baro-VNAV and VDP NA when using Trinidad altimeter setting.

**MISSED APPROACH:** Climb to 6800 then climbing right turn to 9400 direct JUKEX and hold.

AWOS-3 <b>123.6</b>	DENVER CENTER <b>128.375 379.95</b>	UNICOM <b>122.8 (CTAF)</b>
------------------------	--	-------------------------------



ELEV 6056	<b>D</b> TDZE 6037
-----------	--------------------



CATEGORY	A	B	C	D
LPV DA	6287-1 250 (300-1)			
LNAV/VNAV DA	6525-1⅓ 488 (500-1⅓)			
LNAV MDA	6520-1 483 (500-1)	6520-1⅓ 483 (500-1⅓)		
<b>C</b> CIRCLING	6720-1 664 (700-1)	7080-3 1024 (1100-3)	7120-3 1064 (1100-3)	

SW-1, 10 SEP 2020 to 08 OCT 2020

SW-1, 10 SEP 2020 to 08 OCT 2020