

APP CRS	Rwy ldg	5005
168°	TDZE	389
	Apt Elev	389

RNAV (GPS) RWY 17

TURNER COUNTY (75J)

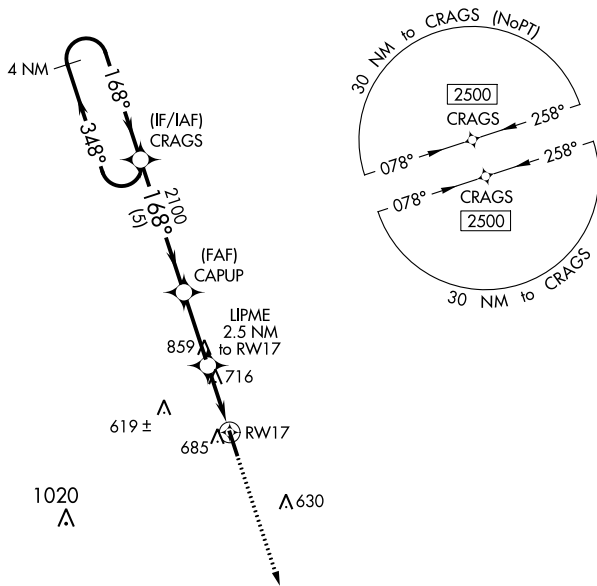
▽ Rwy 17 helicopter visibility reduction below 1 SM NA.
⚠ NA DME/DME RNP-0.3 NA.
 When Fitzgerald altimeter setting not received, procedure NA.
 Procedure NA at night.

MISSED APPROACH: Climb to 2500
 direct SEISE and hold.

FZG AWOS-3
118.625

JACKSONVILLE CENTER
125.75 363.075

UNICOM
122.7 (CTAF) 0

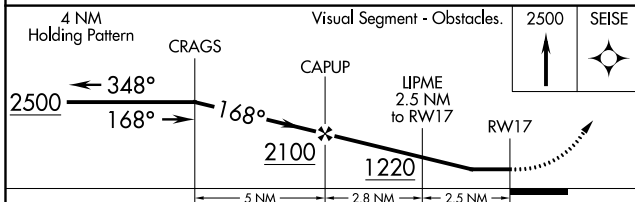


SE-4, 10 SEP 2020 to 08 OCT 2020

SE-4, 10 SEP 2020 to 08 OCT 2020

ELEV	389	TDZE	389
------	------------	------	------------

Diagram showing the final approach segment to RWY 17. The runway is 5005 X 75 feet. The glide slope is 35 degrees. The approach is aligned with 168° to RW17. A SEISE fix is shown 4 NM from RW17 at 168° and 348°.



CATEGORY	A	B	C	D
LNVA MDA	1080-1	691 (700-1)	1080-2	691 (700-2)
C CIRCLING	1100-1	711 (800-1)	1140-2¼ 751 (800-2¼)	1260-2¾ 871 (900-2¾)

MIRL Rwy 17-35 0