

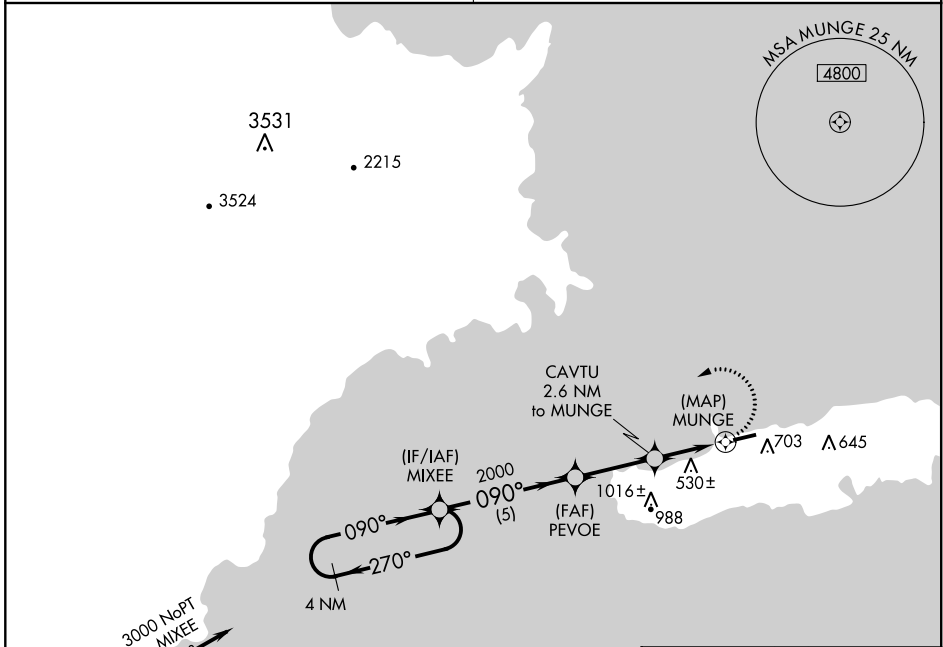
APP CRS	Rwy Idg	3405
090°	TDZE	47
	Apt Elev	49

RNAV (GPS) RWY 9

ANTONIO RIVERA RODRIGUEZ (VQS)(TJVQ)

<p>▼ Use Luis Munoz Marin Intl altimeter setting. DME/DME RNP-0.3 NA. ▲ NA Circling NA south of Rwy 9-27.</p>	<p>MISSED APPROACH: Climbing left turn to 3000 direct MIXEE and hold.</p>
---	---

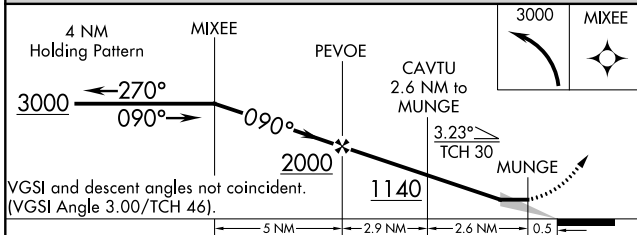
<p>SAN JUAN CERAP APP CON 128.65 279.6</p>	<p>UNICOM 123.0 (CTAF)</p>
---	---------------------------------------



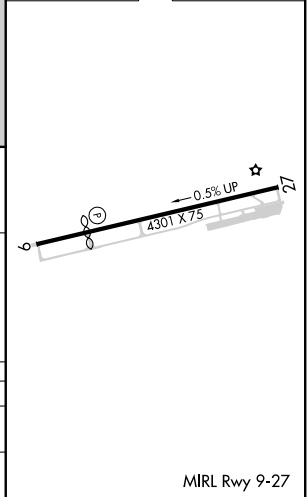
SE-3, 10 SEP 2020 to 08 OCT 2020

SE-3, 10 SEP 2020 to 08 OCT 2020

ELEV	49	D	TDZE	47
------	-----------	----------	------	-----------



CATEGORY	A	B	C	D
LNVA MDA	880-1 833 (900-1)	880-1¼ 833 (900-1¼)		NA
CIRCLING	1140-1¼ 1091 (1100-1¼)	1140-1½ 1091 (1100-1½)		NA



MIRL Rwy 9-27