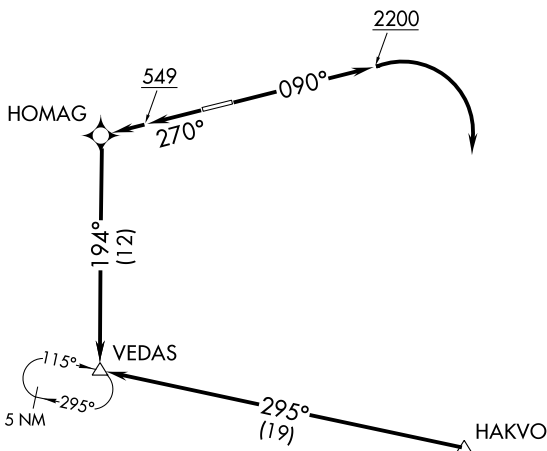


VEDAS FIVE DEPARTURE (RNAV)

SAN JUAN CERAP DEP CON
128.65 279.6
UNICOM 123.0 (CTAF)

**TOP ALTITUDE:
5000**



NOTE: GPS required.
NOTE: RNAV 1.

TAKEOFF MINIMUMS:

Rwy 9: 500-2¼ with minimum climb of 260' per NM to 900.
Rwy 27: 500-2½ with minimum climb of 410' per NM to 1600.

NOTE: Chart not to scale.



DEPARTURE ROUTE DESCRIPTION

TAKEOFF RUNWAY 9: Climb on heading 090° to 2200, then right turn direct HAKVO and right turn on track 295° to VEDAS, thence. . . .

TAKEOFF RUNWAY 27: Climb on heading 270° to 549, then direct HOMAG and on track 194° to VEDAS, thence. . . .

. . . .maintain 5000, expect filed altitude 10 minutes after departure.

SE-3, 10 SEP 2020 to 08 OCT 2020

SE-3, 10 SEP 2020 to 08 OCT 2020