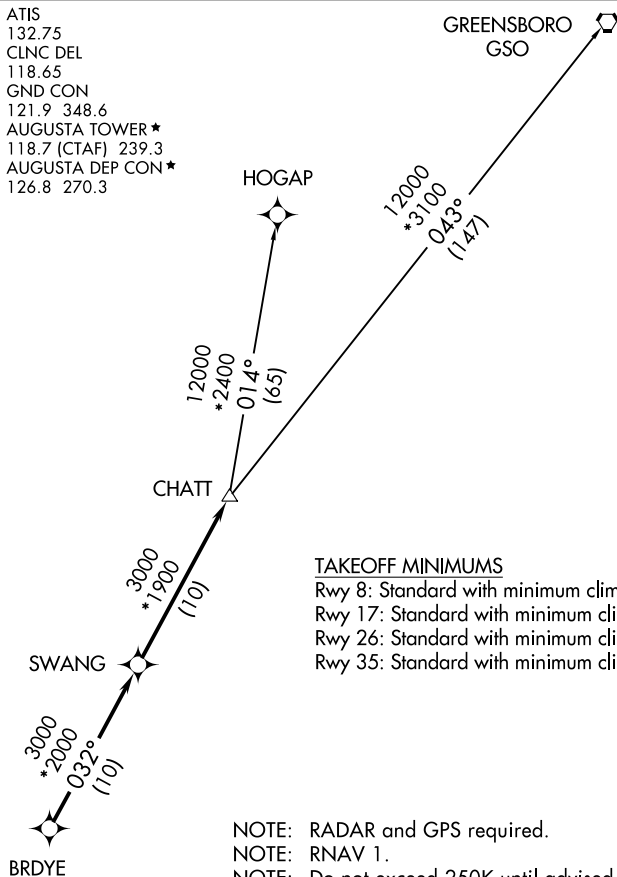


CHATT SIX DEPARTURE (RNAV)

ATIS
 132.75
 CLNC DEL
 118.65
 GND CON
 121.9 348.6
 AUGUSTA TOWER *
 118.7 (CTAF) 239.3
 AUGUSTA DEP CON *
 126.8 270.3

**TOP ALTITUDE:
ASSIGNED BY ATC**



TAKEOFF MINIMUMS

- Rwy 8: Standard with minimum climb of 392' per NM to 2600.
- Rwy 17: Standard with minimum climb of 267' per NM to 2400.
- Rwy 26: Standard with minimum climb of 324' per NM to 2000.
- Rwy 35: Standard with minimum climb of 305' per NM to 2500.

- NOTE: RADAR and GPS required.
- NOTE: RNAV 1.
- NOTE: Do not exceed 250K until advised by ATC.
- NOTE: For turbojet aircraft during Masters golf tournament week.
- NOTE: Use 118.2 for CLNC DEL during Masters golf tournament week.



NOTE: Chart not to scale.



DEPARTURE ROUTE DESCRIPTION

TAKEOFF RWY 8, 17, 26, 35: Climb on assigned heading for RADAR vectors to BRDYE, then on depicted route to CHATT, thence. . . .
 . . . maintain altitude assigned by ATC. Expect clearance to filed altitude/flight level within 10 minutes after departure.

GREENSBORO TRANSITION (CHATT6.GSO)
HOGAP TRANSITION (CHATT6.HOGAP)