

LOC I-MZX 111.75	APP CRS 172°	Rwy Idg 8001
		TDZE 146
		Apt Elev 146

ILS or LOC RWY 17

AUGUSTA RGNL AT BUSH FIELD (AGS)

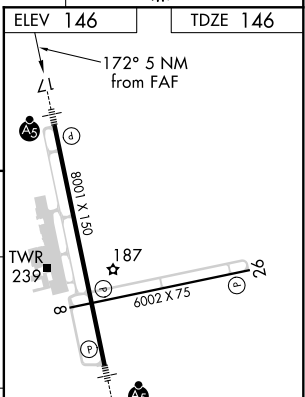
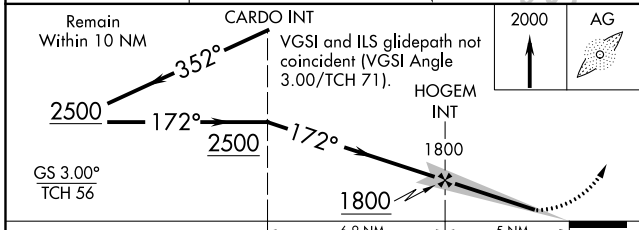
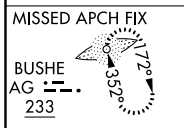
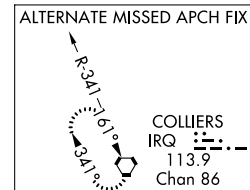
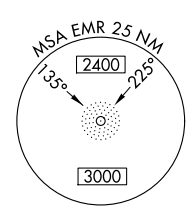
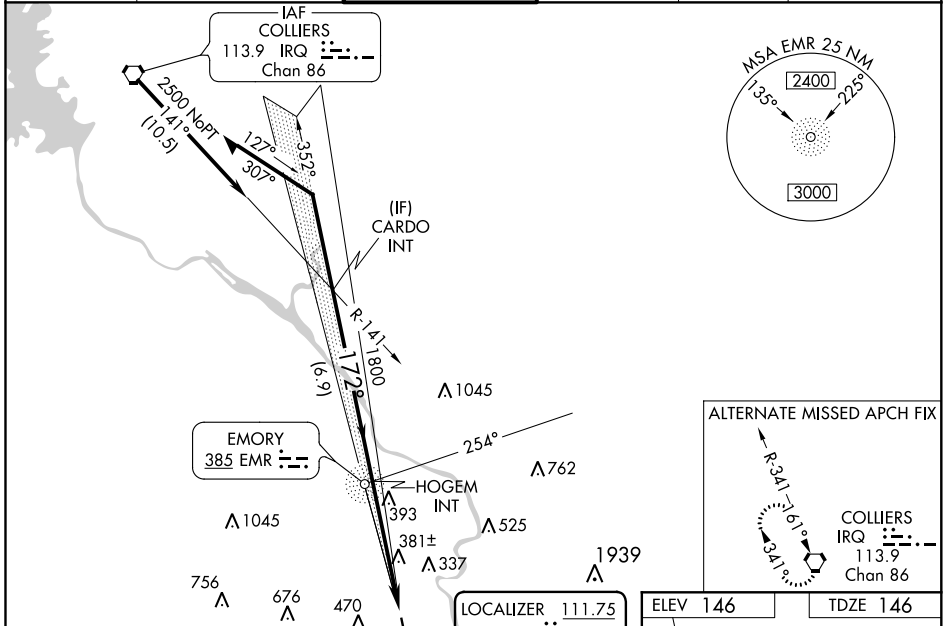
ADF required.

When local altimeter setting not received, use Daniel Field altimeter setting and increase all DA 55 feet and all MDA 60 feet; increase S-LOC 17 Cats C/D visibility to RVR 6000 and Circling Cats C/D visibility 1/4 SM. For inop ALS, increase S-LOC 17 Cats C/D visibility to 1 1/2 SM. For inop ALS when using Daniel Field altimeter setting, increase S-LOC 17 Cats C/D visibility to 1 1/2 SM.

MALSR

MISSED APPROACH: Climb to 2000 direct BUSHE LOM and hold.

ATIS 132.75	AUGUSTA APP CON ★ 126.8 270.3	AUGUSTA TOWER ★ 118.7 (CTAF) 0 239.3	GND CON 121.9 348.6	CLNC DEL 118.65	UNICOM 122.95
-----------------------	-----------------------------------------	------------------------------------------------	-------------------------------	---------------------------	-------------------------



CATEGORY	A	B	C	D
S-ILS 17		350/24	204 (300-1/2)	
S-LOC 17	640/24	494 (500-1/2)	640/50	494 (500-1)
CIRCLING	780-1	634 (700-1)	780-1 3/4 634 (700-1 3/4)	900-2 1/2 754 (800-2 1/2)

FAF to MAP 5 NM					
Knots	60	90	120	150	180
Min:Sec	5:00	3:20	2:30	2:00	1:40

SE-4, 08 OCT 2020 to 05 NOV 2020

SE-4, 08 OCT 2020 to 05 NOV 2020