


LOC I-AGS 110.5	APP CRS 352°	Rwy Idg TDZE Apt Elev	8001 136 146
---------------------------	------------------------	-----------------------------	---

ILS or LOC RWY 35

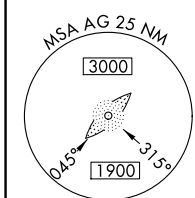
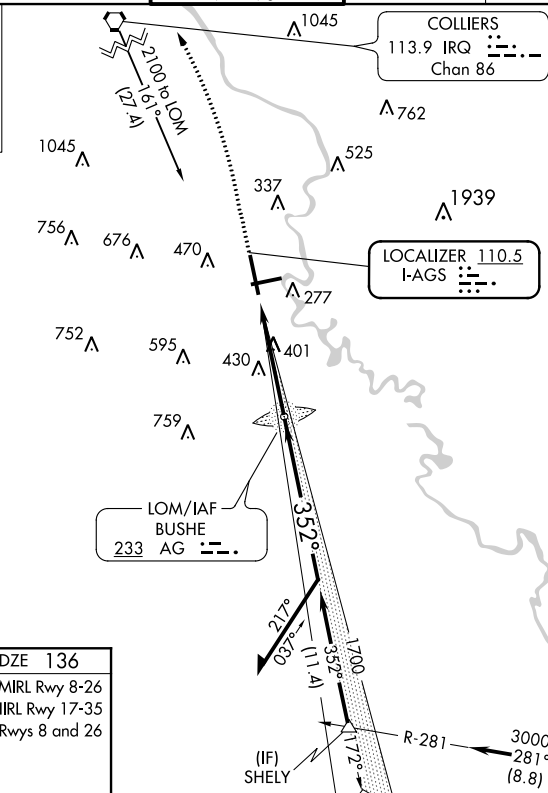
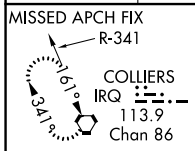
AUGUSTA RGNL AT BUSH FIELD (AGS)

ASR When local altimeter setting not received, use Daniel Field altimeter setting and increase all DA 55 feet and all MDA 60 feet; increase S-LOC 35 and Circling Cats C/D visibility 1/4 mile. When Circling Rwy 8 at night, operational VGSI required, remain on or above VGSI glidepath until threshold. Autopilot coupled approach NA below 940.

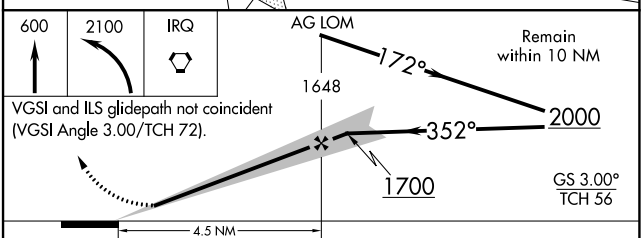
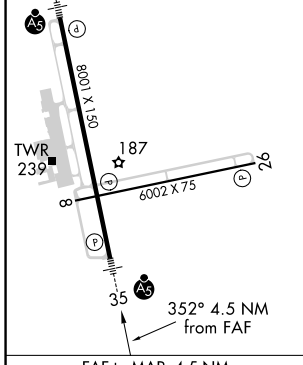
MALS R 

MISSED APPROACH: Climb to 600 then climbing left turn to 2100 direct IRQ VORTAC and hold.

ATIS 132.75	AUGUSTA APP CON ★ 126.8 270.3	AUGUSTA TOWER ★ 118.7 (CTAF) 0 239.3	GND CON 121.9 348.6	CLNC DEL 118.65	UNICOM 122.95
-----------------------	---	--	-------------------------------	---------------------------	-------------------------



ELEV 146	TDZE 136
MIRL Rwy 8-26	HIRL Rwy 17-35
REIL Rwy 8 and 26	



CATEGORY	A	B	C	D
S-ILS 35	336/24		200 (200-1/2)	
S-LOC 35	660/24	524 (600-1/2)	660/55	524 (600-1)
C CIRCLING	780-1	634 (700-1)	780-1 3/4 634 (700-1 1/4)	900-2 1/2 754 (800-2 1/2)

SE-4, 08 OCT 2020 to 05 NOV 2020

SE-4, 08 OCT 2020 to 05 NOV 2020