

# KAOLN SIX DEPARTURE (RNAV)

SE-4, 08 OCT 2020 to 05 NOV 2020

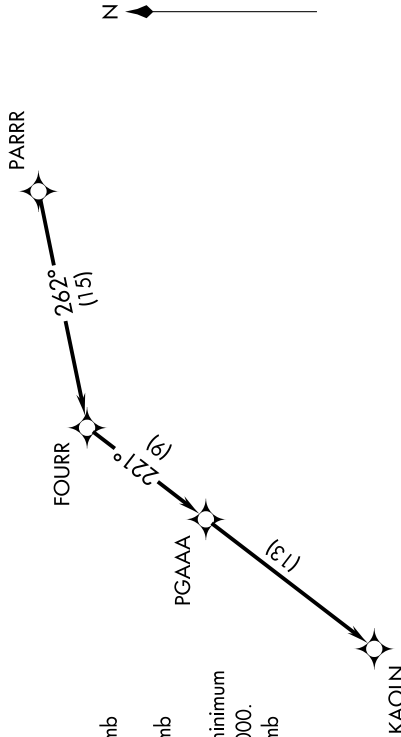
AUGUSTA DEP CON \*  
126.8 270.3  
CLNC DEL  
118.65  
AUGUSTA TOWER \*  
118.7 (CTAF) 239.3

- NOTE: DME/DME/IRU or GPS required.
- NOTE: RADAR required for non-GPS equipped aircraft.
- NOTE: RNAV 1.
- NOTE: For use during Masters Golf Tournament week only.
- NOTE: Do not exceed 250K until advised by ATC.

### TAKEOFF MINIMUMS

- Rwy 8: Standard with minimum climb of 394' per NM to 2500.
- Rwy 17: Standard with minimum climb of 265' per NM to 2400.
- Rwy 26: 300-1 $\frac{3}{4}$  or standard with minimum climb of 312' per NM to 2000.
- Rwy 35: Standard with minimum climb of 302' per NM to 2500.

**TOP ALTITUDE:  
ASSIGNED BY ATC**



NOTE: Chart not to scale.

### DEPARTURE ROUTE DESCRIPTION

TAKEOFF RUNWAYS 8, 17, 26, 35: Climb on assigned heading for RADAR vectors to PARRR, then on depicted route to KAOLN, thence. . . .

. . . . maintain altitude assigned by ATC. Expect clearance to filed altitude/flight level within 10 minutes after departure.

# KAOLN SIX DEPARTURE (RNAV)

SE-4, 08 OCT 2020 to 05 NOV 2020