


WAAS CH 77504 W17A	APP CRS 172°	Rwy Idg TDZE 146 Apt Elev 146	8001
--	------------------------	---	-------------

RNAV (GPS) RWY 17

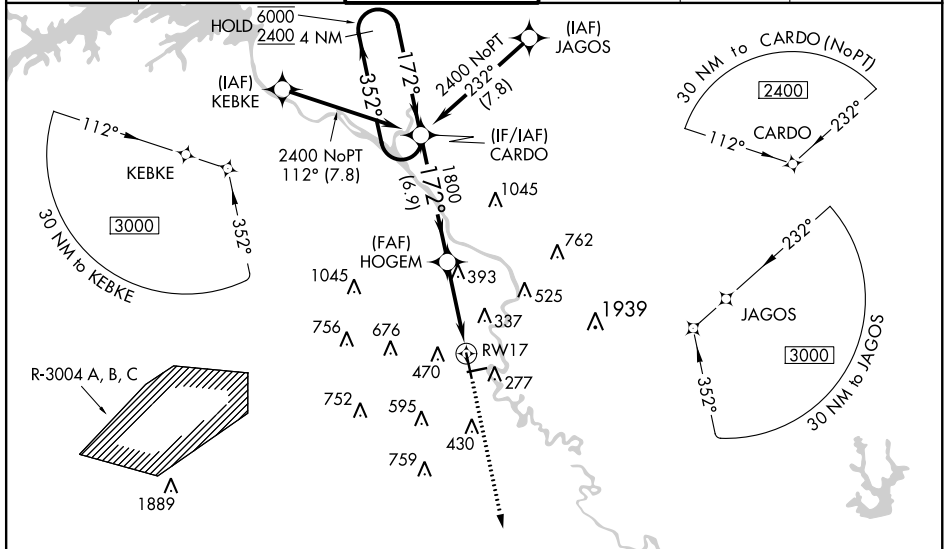
AUGUSTA RGNL AT BUSH FIELD (AGS)

RNP APCH.

⚠ For uncompensated Baro-VNAV systems, LNAV/VNAV NA below -8°C or above 54°C. When local altimeter setting not received, use Daniel Field altimeter setting and increase all DA 55 feet and all MDA 60 feet; increase LNAV and Circling Cats C/D visibility 1/4 SM. Baro-VNAV and VDP NA when using Daniel Field altimeter setting. For inop ALS when using Daniel Field altimeter setting, increase LNAV Cats C/D visibility to 1 3/4 SM.

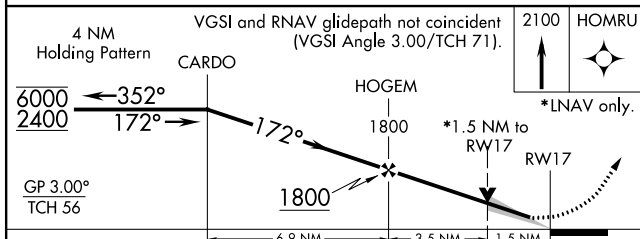
MALSR  MISSED APPROACH: Climb to 2100 direct HOMRU and hold.

ATIS 132.75	AUGUSTA APP CON ★ 126.8 270.3	AUGUSTA TOWER ★ 118.7 (CTAF) 0 239.3	GND CON 121.9 348.6	CLNC DEL 118.65	UNICOM 122.95
-----------------------	---	--	-------------------------------	---------------------------	-------------------------



SE-4, 08 OCT 2020 to 05 NOV 2020

SE-4, 08 OCT 2020 to 05 NOV 2020



CATEGORY	A	B	C	D
LPV DA		350/24	204 (300-1/2)	
LNAV/VNAV DA		518/40	372 (400-3/4)	
LNAV MDA	700/24	554 (600-1/2)	700/60	554 (600-1 1/4)
CIRCLING	780-1	634 (700-1)	780-1 3/4	900-2 1/2
			634 (700-1 3/4)	754 (800-2 1/2)

