

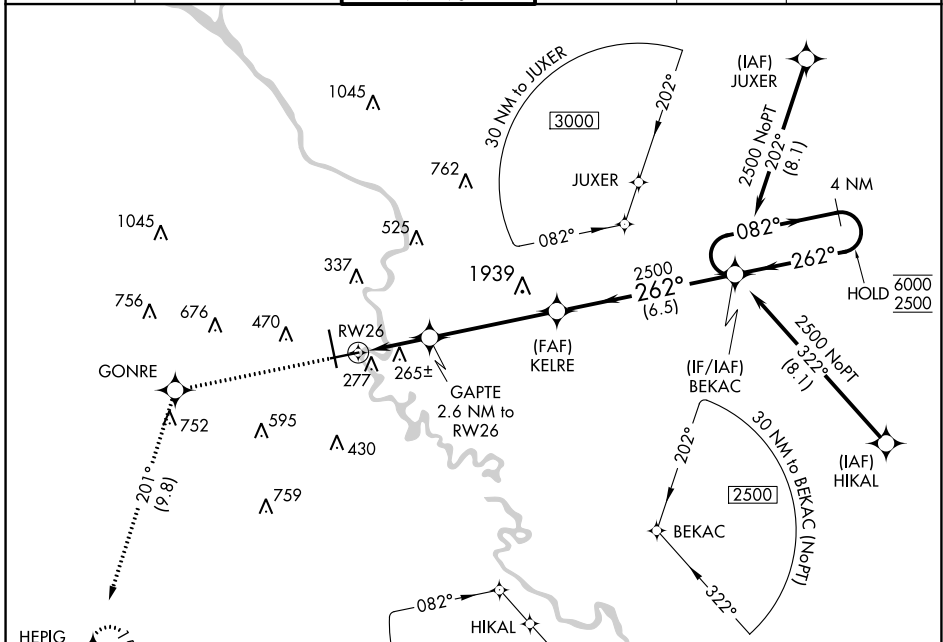
APP CRS	Rwy Idg	6002
262°	TDZE	139
	Apt Elev	146

RNAV (GPS) RWY 26

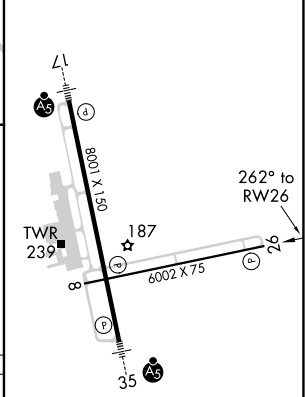
AUGUSTA RGNL AT BUSH FIELD (AGS)

RNP APCH.
 ▼ Rwy 26 helicopter visibility reduction below 3/4 SM NA. VDP NA with Daniel Field altimeter setting.
 ▲ When local altimeter setting not received, use Daniel Field altimeter setting and increase all MDA 60 feet; increase LNAV and Circling Cats C/D visibility 1/4 mile.
 MISSED APPROACH: Climb to 3000 direct GONRE and on track 201° to HEPIG and hold.

ATIS	AUGUSTA APP CON *	AUGUSTA TOWER *	GND CON	CLNC DEL	UNICOM
132.75	126.8 270.3	118.7 (CTAF) 0 239.3	121.9 348.6	118.65	122.95



ELEV	146	TDZE	139
------	-----	------	-----



3000	GONRE	HEPIG	VGSI and descent angles not coincident (VGSI Angle 3.00/TCH 64).	
↑	tr 201°	tr 201°	4 NM Holding Pattern	
RWY 26		GAPTE 2.6 NM to RWY 26	KELRE	BEKAC
1 NM to RWY 26		1020	2500	6000
1.6 NM		4.7 NM	6.5 NM	2500
CATEGORY	A	B	C	D
LNAV MDA	520-1	381 (400-1)	520-1 1/8	381 (400-1 1/8)
CIRCLING	780-1	634 (700-1)	780-1 3/4	900-2 1/2
			634 (700-1 3/4)	754 (800-2 1/2)

MIRL Rwy 8-26
 HIRL Rwy 17-35
 REIL Rws 8 and 26

SE-4, 08 OCT 2020 to 05 NOV 2020

SE-4, 08 OCT 2020 to 05 NOV 2020