

WAAS CH 97303 W35A	APP CRS 352°	Rwy Idg TDZE 137 Apt Elev 146	8001
--	------------------------	---	-------------

RNAV (GPS) RWY 35

AUGUSTA RGNL AT BUSH FIELD (AGS)

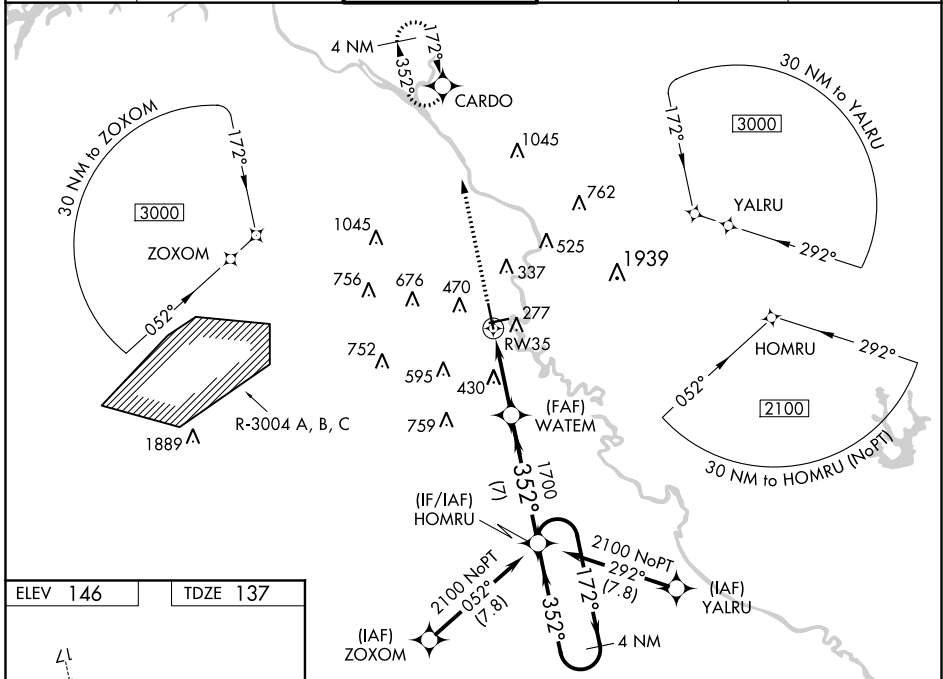
⚠ For uncompensated Baro-VNAV systems, LNAV/VNAV NA below -8°C (18°F) or above 43°C (109°F). Baro-VNAV and VDP NA when using Daniel Field altimeter setting. DME/DME RNP-0.3 NA. When local altimeter setting not received, use Daniel Field altimeter setting and increase all DA 55 feet and all MDA 60 feet; increase LNAV/VNAV all Cats and Circling Cats C/D visibility 1/4 SM, LNAV Cats C/D visibility 1/8 SM. For inop ALS, increase LNAV Cats C/D visibility to 1 1/8 SM. For inop ALS when using Daniel Field altimeter setting, increase LPV all Cats visibility to RVR 5000, and LNAV Cats C/D visibility to 1 1/4 SM.

ASR

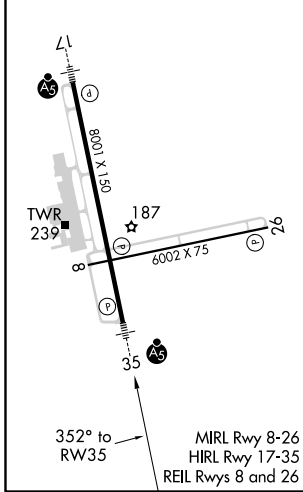
MALSRL

MISSED APPROACH:
Climb to 2400 direct CARDO and hold.

ATIS 132.75	AUGUSTA APP CON ★ 126.8 270.3	AUGUSTA TOWER ★ 118.7 (CTAF) 0 239.3	GND CON 121.9 348.6	CLNC DEL 118.65	UNICOM 122.95
-----------------------	---	--	-------------------------------	---------------------------	-------------------------



ELEV 146	TDZE 137
-----------------	-----------------



2400 CARDO

VGSI and RNAV glidepath not coincident (VGSI Angle 3.00/TCH 72).

4 NM Holding Pattern

*LNAV only.

WATEM 1700

1700

172° → 2100

← 352°

GP 3.00° TCH 56

1.5 NM, 3.3 NM, 7 NM

CATEGORY	A	B	C	D
LPV DA		387/24	250 (300-1/2)	
LNAV/VNAV DA		657/60	520 (600-1 1/4)	
LNAV MDA	680/24	543 (600-1/2)	680/60	543 (600-1 1/4)
C CIRCLING	780-1	634 (700-1)	780-1 3/4 634 (700-1 1/4)	900-2 1/2 754 (800-2 1/2)

SE-4, 08 OCT 2020 to 05 NOV 2020

SE-4, 08 OCT 2020 to 05 NOV 2020