

NDB EMR 385	APP CRS 104°	Rwy Idg TDZE Apt Elev	3407 422 422
-----------------------	------------------------	-----------------------------	---

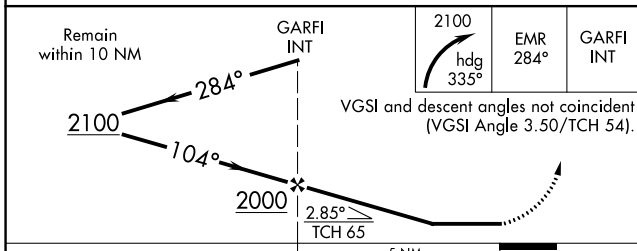
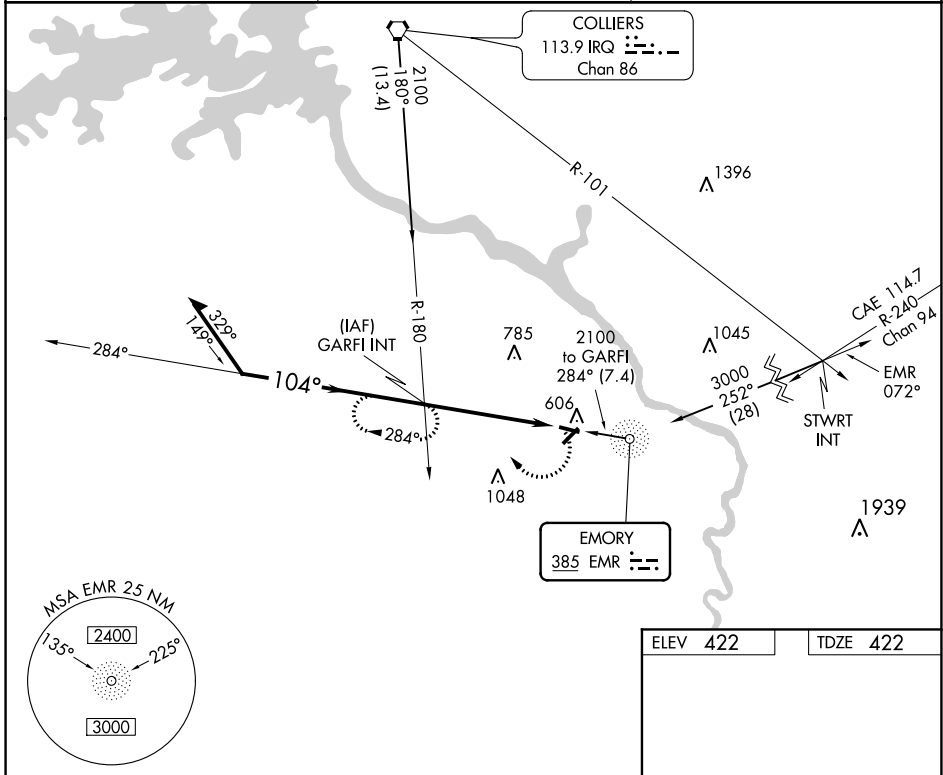
NDB RWY 11

DANIEL FIELD (DNL)

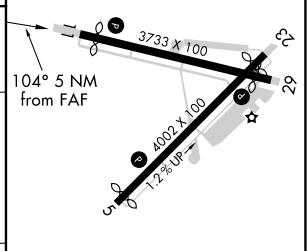
ASR Helicopter visibility reduction below 1 SM NA. When local altimeter setting not received, use Augusta Rgnl at Bush Field altimeter setting and increase all MDA 60 feet and increase S-11 and Circling Cats C and D visibility ¼ mile. Procedure NA at night.

MISSED APPROACH: Climbing right turn to 2100 heading 335° and EMR 284° bearing to GARFI INT and hold.

ASOS 135.275	AUGUSTA APP CON * 126.8 270.3	UNICOM 123.05 (CTAF) 0
------------------------	---	----------------------------------



ELEV 422	TDZE 422
----------	----------



CATEGORY	A	B	C	D
S-11	1040-1	618 (700-1)	1040-1¾ 618 (700-1¾)	1040-2 618 (700-2)
C CIRCLING	1040-1	618 (700-1)	1400-3	978 (1000-3)

REIL Rwy 11 0
MRL Rws 5-23 and 11-29 0
FAF to MAP 5 NM

Knots	60	90	120	150	180
Min:Sec	5:00	3:20	2:30	2:00	1:40

SE-4, 08 OCT 2020 to 05 NOV 2020

SE-4, 08 OCT 2020 to 05 NOV 2020