

CELTK FIVE DEPARTURE (RNAV)

AL-58 (FAA)

BOSTON, MASSACHUSETTS

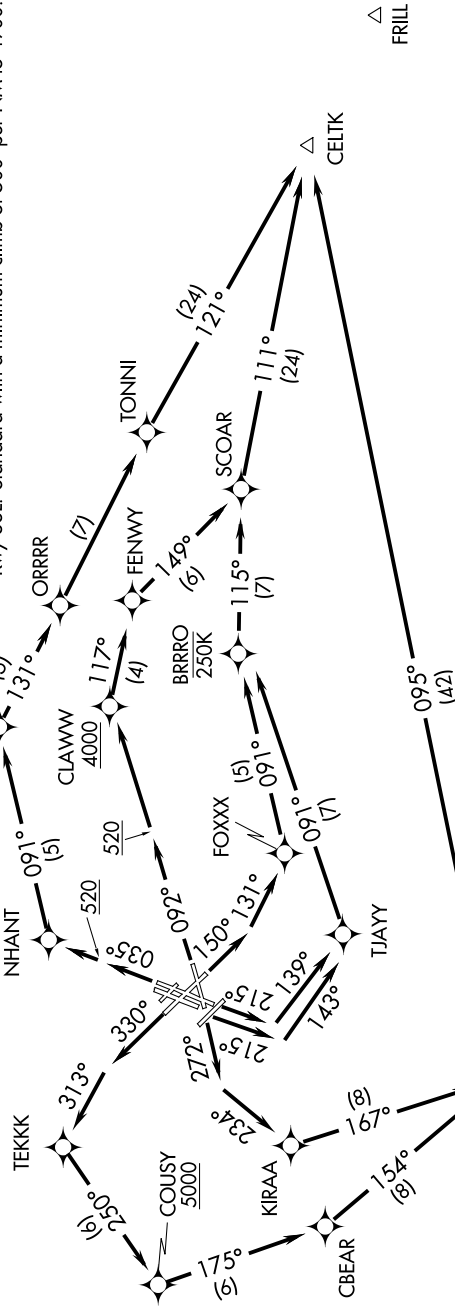
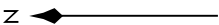
NE-1, 08 OCT 2020 to 05 NOV 2020

- D-ATIS 135.0
- CLNC DEL 121.65 257.8
- CPDIC
- GND CON 121.9 121.75
- BOSTON TOWER 128.8 257.8 (WEST)
- 132.225 257.8 (EAST)
- BOSTON DEP CON 133.0

TOP ALTITUDE:
5000

TAKEOFF MINIMUMS:

- Rwys 4L, 14, 15L, 32, 33R: NA-ATC.
- Rwy 4R: Standard with minimum climb of 500' per NM to 3600.
- Rwy 9: Standard with minimum climb of 500' per NM to 4000.
- Rwy 15R: Standard with minimum climb of 500' per NM to 520.
- Rwy 22L: 300-1 with minimum climb of 500' per NM to 520, or standard with minimum climb of 500' per NM to 520 if lower reports no tall vessels in the departure area.
- Rwy 22R: Standard with minimum climb of 500' per NM to 520.
- Rwy 27: Standard with a minimum climb of 500' per NM to 1300.
- Rwy 33L: Standard with a minimum climb of 500' per NM to 4900.



NOTE: Departure hdg/RNAV tracks/vectors are predicated on avoiding noise sensitive areas. Flight crew awareness and compliance is important in minimizing noise impacts on surrounding communities.

NOTE: Rwys 15R, 22L, 22R: Do not exceed 210K until 520' MSL.

NOTE: Alt/Below 250K until BRRRO.

NOTE: DME/DME/IRU or GPS required.

NOTE: RADAR required for non-GPS equipped aircraft.

NOTE: RNAV 1.

NOTE: For Turbojets only.

(NARRATIVE ON FOLLOWING PAGE)

NOTE: Chart not to scale.

CELTK FIVE DEPARTURE (RNAV)

NE-1, 08 OCT 2020 to 05 NOV 2020