

HYLND FIVE DEPARTURE (RNAV)

AL-58 (FAA)

BOSTON, MASSACHUSETTS

D-ATIS 135.0
 CLNC DEL
 121.65 257.8
 CPDLC
 GND CON
 121.9 121.75
 BOSTON TOWER
 128.8 257.8 (WEST)
 132.225 257.8 (EAST)
 BOSTON DEP CON
 133.0

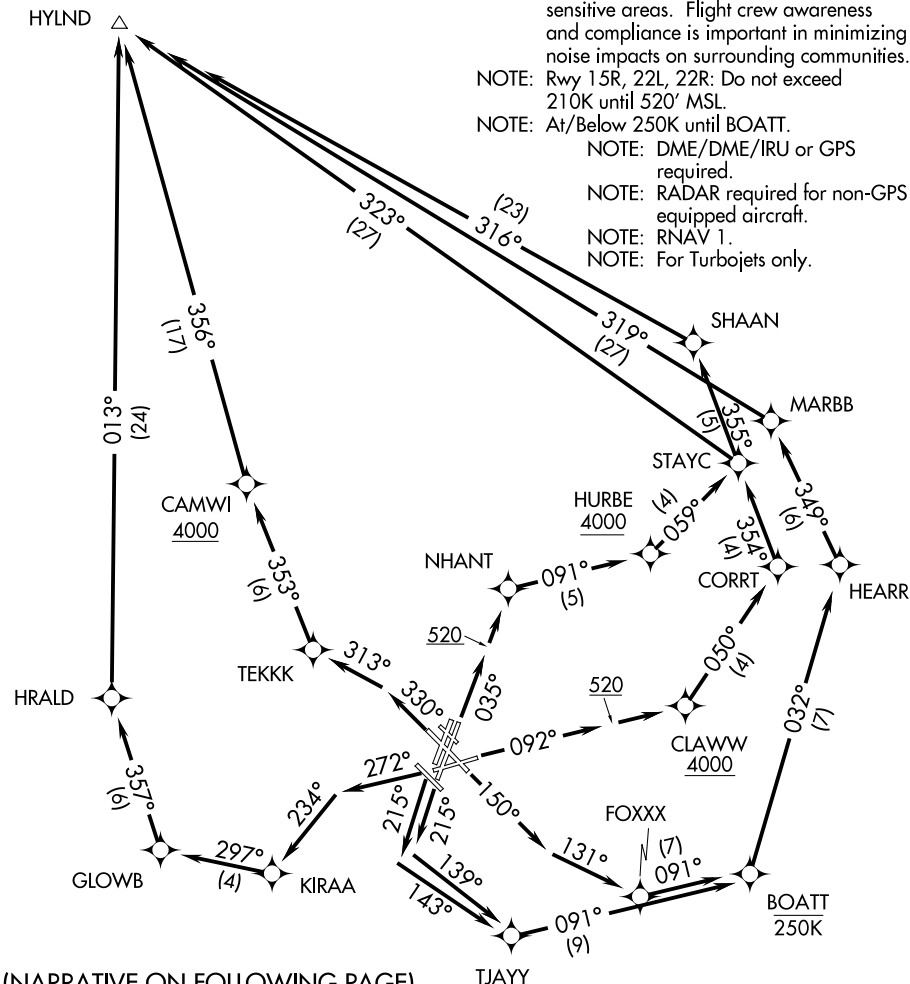
TAKEOFF MINIMUMS:

Rwys 4L, 14, 15L, 32, 33R: NA - ATC
 Rwy 4R: Standard with minimum climb of 500' per NM to 3600.
 Rwy 9: Standard with minimum climb of 500' per NM to 4000.
 Rwys 15R, 22R: Standard with minimum climb of 500' per NM to 520.
 Rwy 22L: 300-1 with minimum climb of 500' per NM to 520, or standard with minimum climb of 500' per NM to 520 if tower reports no tall vessels in the departure area.
 Rwy 27: Standard with a minimum climb of 500' per NM to 1300.
 Rwy 33L: Standard with a minimum climb of 500' per NM to 3100.

TOP ALTITUDE:
5000

 MANCHESTER
 MHT

- NOTE: Departure hdg/RNAV tracks/vectors are predicated on avoiding noise sensitive areas. Flight crew awareness and compliance is important in minimizing noise impacts on surrounding communities.
- NOTE: Rwy 15R, 22L, 22R: Do not exceed 210K until 520' MSL.
- NOTE: At/Below 250K until BOATT.
- NOTE: DME/DME/IRU or GPS required.
- NOTE: RADAR required for non-GPS equipped aircraft.
- NOTE: RNAV 1.
- NOTE: For Turbojets only.



(NARRATIVE ON FOLLOWING PAGE)

NOTE: Chart not to scale.

NE-1, 08 OCT 2020 to 05 NOV 2020

NE-1, 08 OCT 2020 to 05 NOV 2020