

LOC/DME I-DGU <b>111.3</b> Chan 50	APP CRS <b>272°</b>	Rwy ldg <b>7001</b> TDZE <b>17</b> Apt Elev <b>19</b>
--	------------------------	---

# ILS or LOC RWY 27

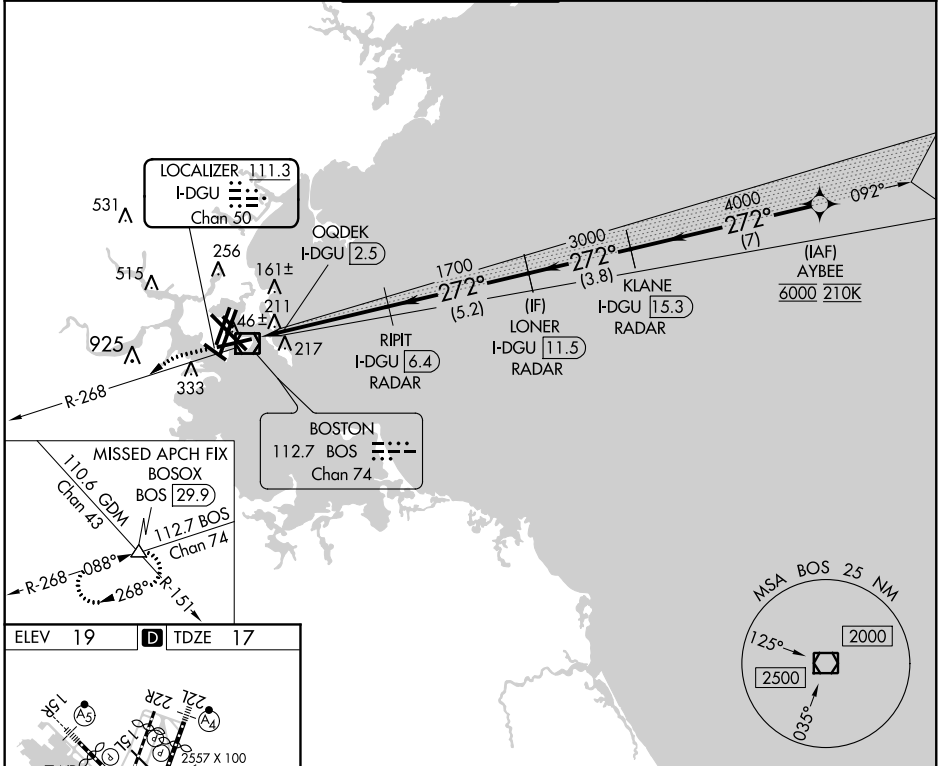
GENERAL EDWARD LAWRENCE LOGAN INTL (BOS)

DME or RADAR required. RADAR required for procedure entry.  
From AYBEE: RNAV 1-GPS required.

MISSED APPROACH: Climb to 3000  
on BOS VOR/DME R-268 to  
BOSOX INT/BOS 29.9 DME and hold.

- Circling NA to Rwy 14.
- Circling NA for Cats C and D west of Rwy 4L and 15R.

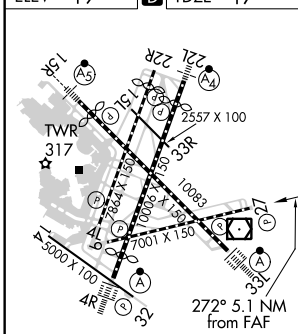
D-ATIS <b>135.0</b>	BOSTON APP CON <b>120.6 263.1</b>	BOSTON TOWER <b>128.8 257.8 (WEST)</b> <b>132.225 257.8 (EAST)</b>	GND CON <b>121.9 121.75</b>	CLNC DEL <b>121.65 257.8</b>	CPDLC
------------------------	--------------------------------------	--	--------------------------------	---------------------------------	-------



NE-1, 08 OCT 2020 to 05 NOV 2020

NE-1, 08 OCT 2020 to 05 NOV 2020

ELEV 19	<b>D</b>	TDZE 17
---------	----------	---------



TDZ/CL Rwy 4R, 15R and 33L  
REIL Rwy 4L, 27 and 32  
MIRL Rwy 15L-33R  
HIRL Rwy 4L-22R, 4R-22L, 9-27, 14-32 and 15R-33L

FAF to MAP 3.9 NM

Knots	60	90	120	150	180
Min:Sec	3:48	2:32	1:54	1:31	1:16

3000 BOSOX (VGSi and ILS glidepath not coincident (VGSi Angle 3.00/TCH 71).)

BOS R-268

QOQDEK I-DGU 2.5

RIPIT I-DGU 6.4 RADAR

LONER I-DGU 11.5 RADAR

KLANE I-DGU 15.3 RADAR

AYBEE

6000

GS 3.00° TCH 57

1.2	3.9 NM	5.2 NM	3.8 NM	7 NM
CATEGORY	A	B	C	D
S-ILS 27		460-1½	443 (500-1½)	
S-LOC 27		460-1½	443 (500-1½)	
CIRCLING	940-1½ 921 (1000-1½)	1040-1½ 1021 (1100-1½)	620-1¾ 601 (700-1¾)	620-2 601 (700-2)