

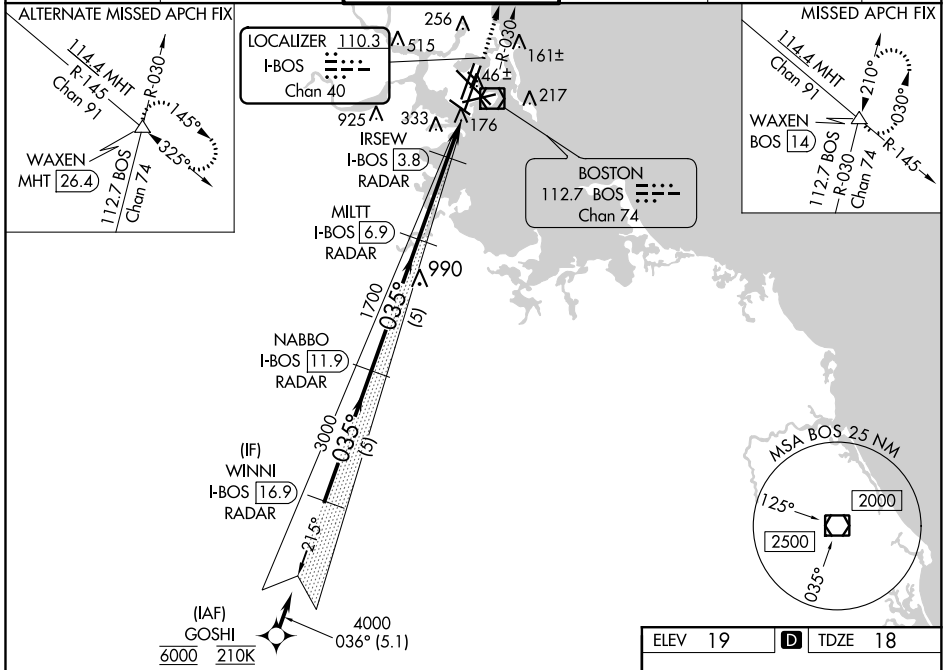
LOC/DME I-BOS 110.3 Chan 40	APP CRS 035°	Rwy Idg 8851 TDZE 18 Apt Elev 19
---	------------------------	---

ILS or LOC RWY 4R

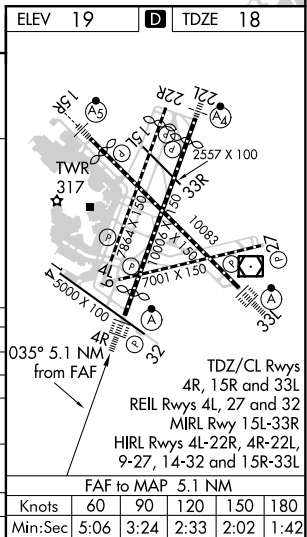
GENERAL EDWARD LAWRENCE LOGAN INTL (BOS)

RNAV 1-GPS or RADAR required for procedure entry. DME or RADAR required.	ALSF-2 	MISSED APPROACH: Climb to 3000 on BOS VOR/DME R-030 to WAXEN INT/BOS 14 DME and hold.
# For inop ALS, increase S-LOC 4R Cat A/B visibility to RVR 5500; Rwy 4R helicopter visibility reduction below 4000 RVR NA. **When vessels taller than 144 feet present, S-ILS 4R NA.		

D-ATIS 135.0	BOSTON APP CON 120.6 263.1	BOSTON TOWER 128.8 257.8 (WEST) 132.225 257.8 (EAST)	GND CON 121.9 121.75	CLNC DEL 121.65 257.8	CPDLC
------------------------	--------------------------------------	--	--------------------------------	---------------------------------	-------



GOSHI	VGSi and ILS glidepath not coincident WINNI (VGSi Angle 3.00/TCH 67).			3000	WAXEN
I-BOS 16.9 RADAR	NABBO I-BOS 11.9 RADAR	MILT I-BOS 6.9 RADAR	IRSEW I-BOS 3.8 RADAR	I-BOS 2.9	I-BOS 1.8
6000	4000	3000	1700	*700	
GS 3.00° TCH 51	036°	035°			
	5.1 NM	5 NM	5 NM	3.1 NM	0.9 NM
CATEGORY	A	B	C	D	
S-ILS 4R	218/18		200 (200-½)		
S-LOC 4R	440/24	422 (500-½)	440/40	422 (500-¾)	
CIRCLING	940-1¼ 921 (1000-1¼)	1040-1½ 1021 (1100-1½)	620-1¾ 601 (700-1¾)	620-2 601 (700-2)	
** APPROACH MINIMA WHEN CONTROL TOWER REPORTS TALL VESSELS IN APPROACH AREA					
S-ILS 4R	374/40		356 (400-¾)		
S-LOC 4R #	440/40		422 (500-¾)		



NE-1, 08 OCT 2020 to 05 NOV 2020

NE-1, 08 OCT 2020 to 05 NOV 2020

ILS or LOC RWY 4R

TDZ/CL Rwy's 4R, 15R and 33L
REIL Rwy's 4L, 27 and 32
MIRL Rwy 15L-33R
HIRL Rwy's 4L-22R, 4R-22L, 9-27, 14-32 and 15R-33L

FAF to MAP 5.1 NM					
Knots	60	90	120	150	180
Min:Sec	5:06	3:24	2:33	2:02	1:42