

PATSS FIVE DEPARTURE (RNAV)

AL-58 (FAA)

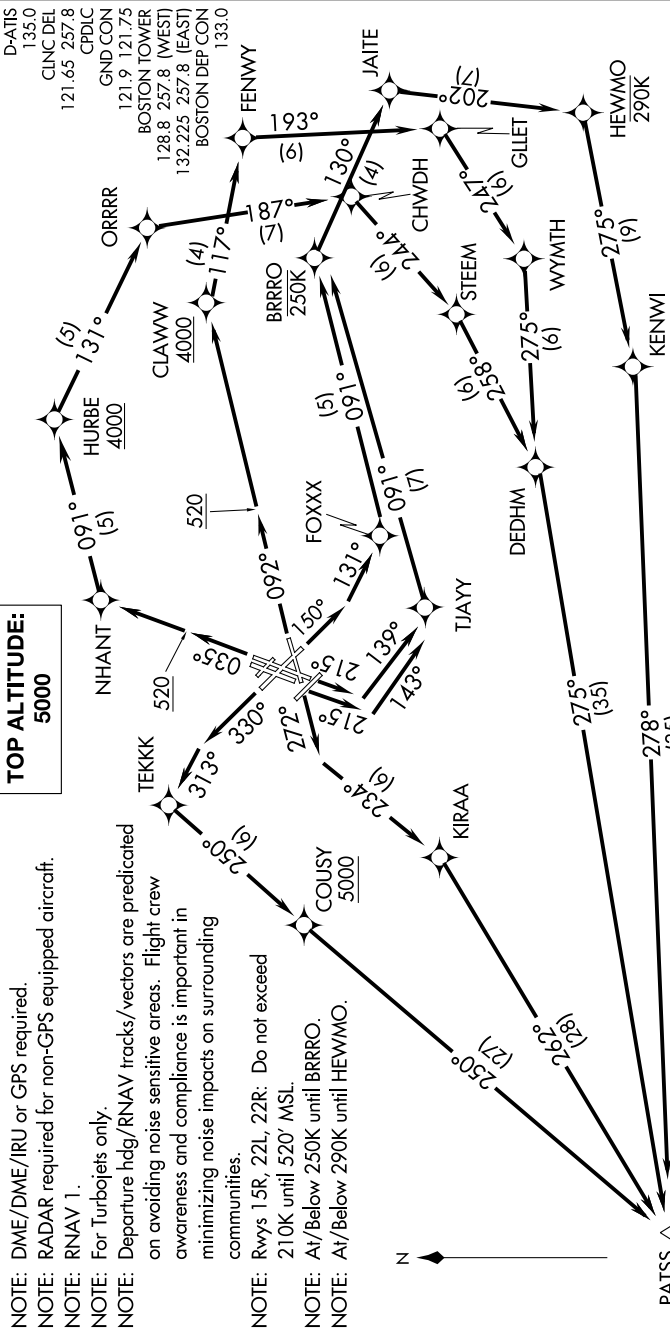
BOSTON, MASSACHUSETTS

NE-1, 08 OCT 2020 to 05 NOV 2020

TOP ALTITUDE:
5000

NOTE: DME/DME/IRU or GPS required.
NOTE: RADAR required for non-GPS equipped aircraft.
NOTE: RNAV 1.
NOTE: For Turboprops only.
NOTE: Departure hdg/RNAV tracks/vectors are predicated on avoiding noise sensitive areas. Flight crew awareness and compliance is important in minimizing noise impacts on surrounding communities.

NOTE: Rwy 15R, 22L, 22R: Do not exceed 210K until 520' MSL.
NOTE: A1/Below 250K until BRRRO.
NOTE: A1/Below 290K until HEWMO.



TAKEOFF MINIMUMS:

- Rwys 4L, 14, 15L, 32, 33R: NA-ATC.
- Rwy 4R: Standard with minimum climb of 500' per NM to 3600.
- Rwy 9: Standard with minimum climb of 500' per NM to 4000.
- Rwy 15R: Standard with minimum climb of 500' per NM to 520.
- Rwy 22L: 300-1 with minimum climb of 500' per NM to 520, or standard with minimum climb of 500' per NM to 520 if tower reports no tall vessels in the departure area.
- Rwy 22R: Standard with minimum climb of 500' per NM to 520.
- Rwy 27: Standard with a minimum climb of 500' per NM to 1300.
- Rwy 33L: Standard with a minimum climb of 500' per NM to 4900.

- △ NELIE
- ◻ CARMEL
- ◻ CMK

(NARRATIVE ON
FOLLOWING PAGE)

NOTE: Chart not to scale.

NE-1, 08 OCT 2020 to 05 NOV 2020

PATSS FIVE DEPARTURE (RNAV)

BOSTON, MASSACHUSETTS