

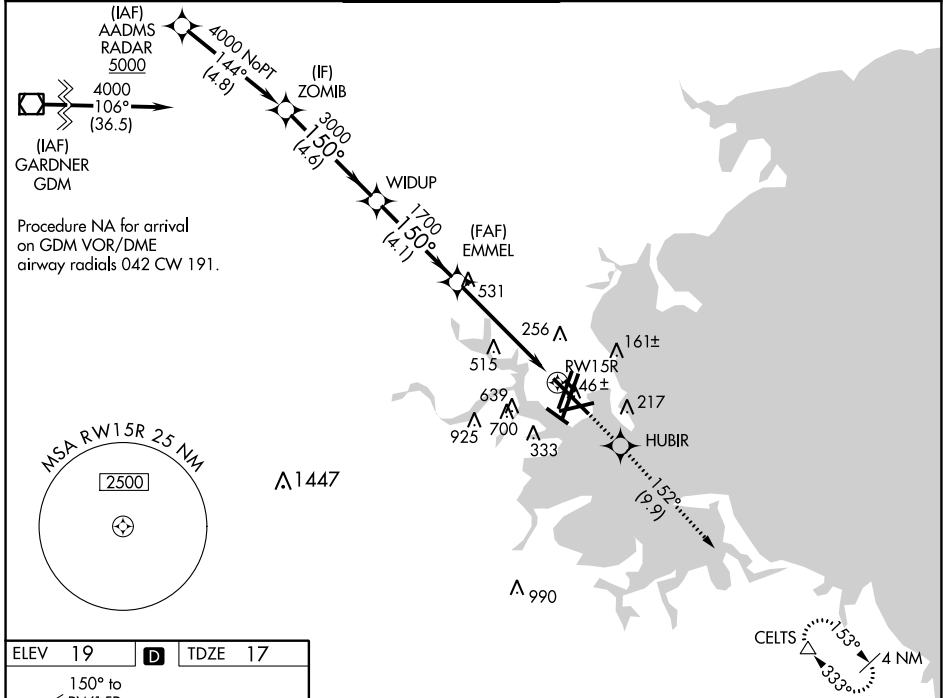
WAAS CH 42925 W15A	APP CRS 150°	Rwy ldg TDZE Apt Elev	9201 17 19
--	------------------------	-----------------------------	---------------------------------------

RNAV (GPS) RWY 15R

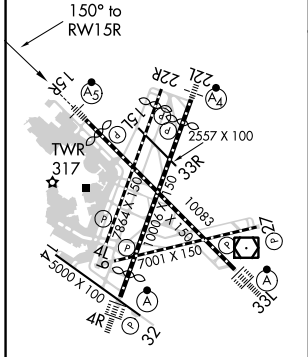
GENERAL EDWARD LAWRENCE LOGAN INTL (BOS)

RNP APCH.	MALSR	MISSED APPROACH: Climb to 3000 direct HUBIR and on track 152° to CELTS and hold.
<p>▼ For uncompensated Baro-VNAV systems, LNAV/VNAV NA below -15°C or above 54°C. Circling NA to Rwy 14. Circling NA for Cats C and D west of Rwys 4L and 15R. For inop ALS, increase LNAV Cats C and D visibility to 1 3/8 SM.</p> <p>▲</p>		

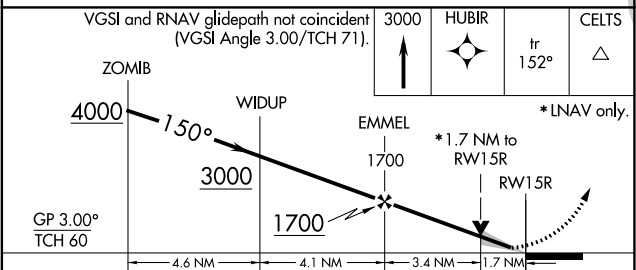
D-ATIS 135.0	BOSTON APP CON 120.6 263.1	BOSTON TOWER 128.8 257.8 (WEST) 132.225 257.8 (EAST)	GND CON 121.9 121.75	CLNC DEL 121.65 257.8	CPDLC
------------------------	--------------------------------------	--	--------------------------------	---------------------------------	-------



ELEV 19	D	TDZE 17
---------	----------	---------



TDZ/CL Rwys 4R, 15R and 33L
 REIL Rwys 4L, 27 and 32
 MIRL Rwy 15L-33R
 HIRL Rwys 4L-22R, 4R-22L, 9-27, 14-32 and 15R-33L



CATEGORY	A	B	C	D
LPV DA		217/18	200 (200-1/2)	
LNAV/VNAV DA		567-1 1/8	550 (600-1 1/8)	
LNAV MDA	620/24	603 (700-1/2)	620-1 3/8	603 (700-1 3/8)
C CIRCLING	940-1 1/4 921 (1000-1 1/4)	1040-1 1/2 1021 (1100-1 1/2)	620-1 3/4 601 (700-1 3/4)	620-2 601 (700-2)

NE-1, 08 OCT 2020 to 05 NOV 2020

NE-1, 08 OCT 2020 to 05 NOV 2020