

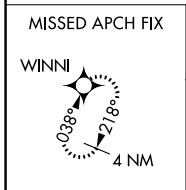
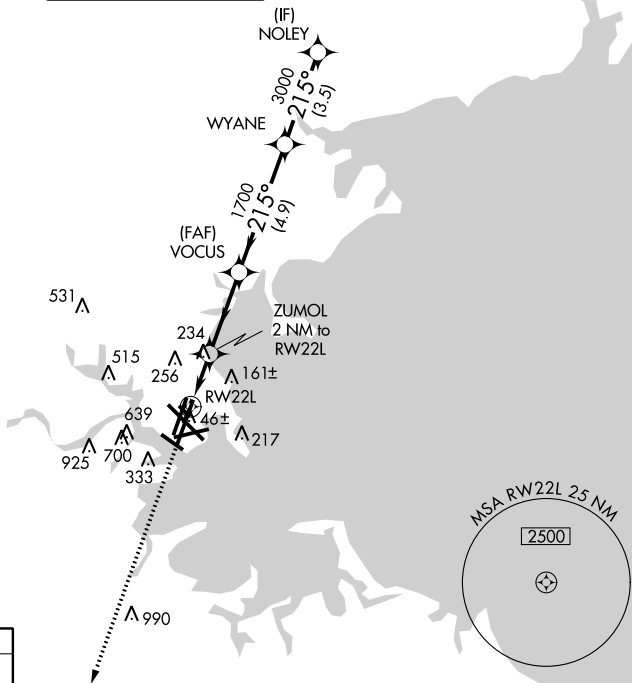
WAAS CH 45925 W22A	APP CRS 215°	Rwy Idg TDZE Apt Elev	8806 16 19
--	------------------------	-----------------------------	---------------------------------------

RNAV (GPS) RWY 22L

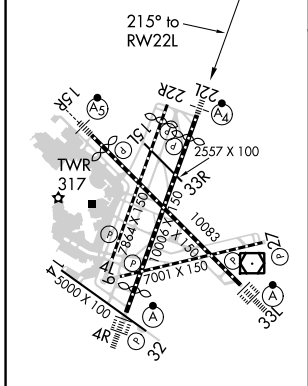
GENERAL EDWARD LAWRENCE LOGAN INTL (BOS)

<p>⚠ DME/DME RNP-0.3 NA. Circling NA to Rwy 14. Circling NA for Cats C and D west of Rwys 4L and 15R. For inoperative ALS, increase LNAV/VNAV Cat D visibility to RVR 6000 and LNAV Cat D visibility to 1½ SM. For uncompensated Baro-VNAV systems, LNAV/VNAV NA below -13°C (9°F) or above 43°C (109°F).</p>	<p>MALSF</p>	<p>MISSED APPROACH: Climb to 3000 direct WINNI and hold.</p>			
		D-ATIS 135.0	BOSTON APP CON 120.6 263.1	BOSTON TOWER 128.8 257.8 (WEST) 132.225 257.8 (EAST)	GND CON 121.9 121.75

RADAR REQUIRED



ELEV 19	D	TDZE 16
---------	----------	---------



TDZ/CL Rwys 4R, 15R and 33L
 REIL Rwys 4L, 27 and 32
 MIRL Rwy 15L-33R
 HIRL Rwys 4L-22R, 4R-22L,
 9-27, 14-32 and 15R-33L

<p>3000 WINNI</p> <p>VGSI and RNAV glidepath not coincident (VGSI Angle 3.00/TCH 71).</p>	<p>ZUMOL 2 NM to RWY 22L</p> <p>VOCUS 1700</p> <p>WYANE 3000</p> <p>NOLEY 4000</p> <p>GP 3.00° TCH 55</p>			
	<p>*LNAV only.</p> <p>RWY 22L</p> <p>*1.4 NM to RWY 22L</p> <p>*700</p> <p>1.4 NM 0.6 3.1 NM 4.9 NM 3.5 NM</p>			
CATEGORY	A	B	C	D
LPV DA		216/40	200 (200-¾)	
LNAV/VNAV DA		408/50	392 (400-1)	
LNAV MDA	540/40	524 (600-¾)	540-1¼	524 (600-1¼)
CIRCLING	960-1¼ 941 (1000-1¼)	1060-1½ 1041 (1100-½)	640-1¾ 621 (700-1¾)	640-2 621 (700-2)