

RNAV (GPS) RWY 27

GENERAL EDWARD LAWRENCE LOGAN INTL (BOS)

APP CRS	Rwy Idg	7001
272°	TDZE	17
	Apt Elev	19

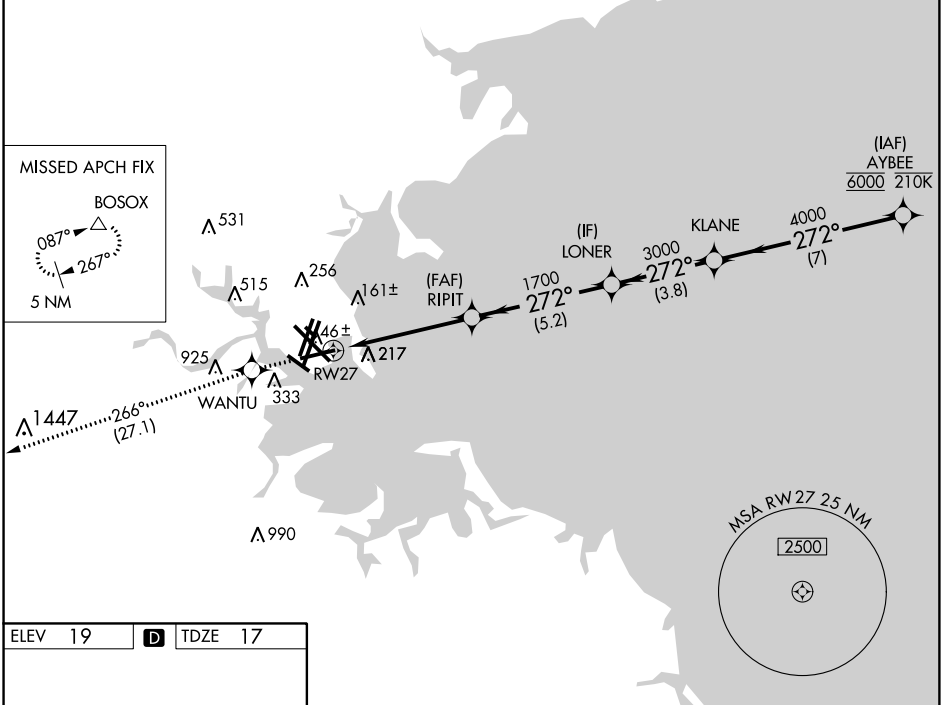
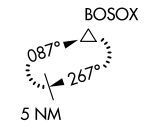
RNP APCH.

- For uncompensated Baro-VNAV systems, LNAV/VNAV NA below -15°C or above 54°C. Circling NA to Rwy 14.
- Circling NA for Cats C and D west of Rwys 4L and 15R.

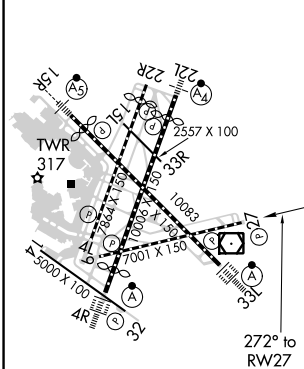
MISSED APPROACH: Climb to 3000 direct WANTU and on track 266° to BOSOX and hold.

D-ATIS	BOSTON APP CON	BOSTON TOWER	GND CON	CLNC DEL	CPDLC
135.0	120.6 263.1	128.8 257.8 (WEST) 132.225 257.8 (EAST)	121.9 121.75	121.65 257.8	

MISSED APCH FIX

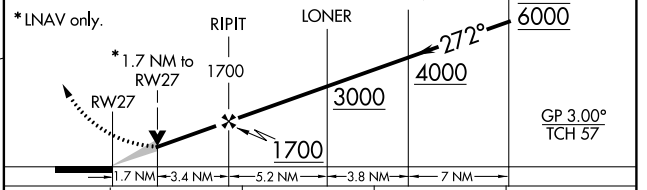


ELEV 19	D	TDZE 17
---------	----------	---------



TDZ/CL Rwys 4R, 15R and 33L
 REIL Rwys 4L, 27 and 32
 MIRL Rwy 15L-33R
 HIRL Rwys 4L-22R, 4R-22L, 9-27, 14-32 and 15R-33L

3000	WANTU	tr 266°	BOSOX	VGSI and RNAV glidepath not coincident (VGSI Angle 3.00/TCH 57).	AYBEE
------	-------	---------	-------	--	-------



CATEGORY	A		B		C		D
LNAV/VNAV DA	510-1 ³ / ₈				493 (500-1 ³ / ₈)		
LNAV MDA	640-1 ¹ / ₂		623 (700-1 ¹ / ₂)		640-1 ³ / ₈		623 (700-1 ³ / ₈)
CIRCLING	940-1 ¹ / ₄ 921 (1000-1 ¹ / ₄)		1040-1 ¹ / ₂ 1021 (1100-1 ¹ / ₂)		620-1 ³ / ₈ 601 (700-1 ³ / ₈)		620-2 601 (700-2)

NE-1, 08 OCT 2020 to 05 NOV 2020

NE-1, 08 OCT 2020 to 05 NOV 2020