

WAAS CH <b>69525</b> <b>W33A</b>	APP CRS <b>330°</b>	Rwy Idg TDZE <b>16</b> Apt Elev <b>19</b>	<b>10083</b>
--	------------------------	---	--------------

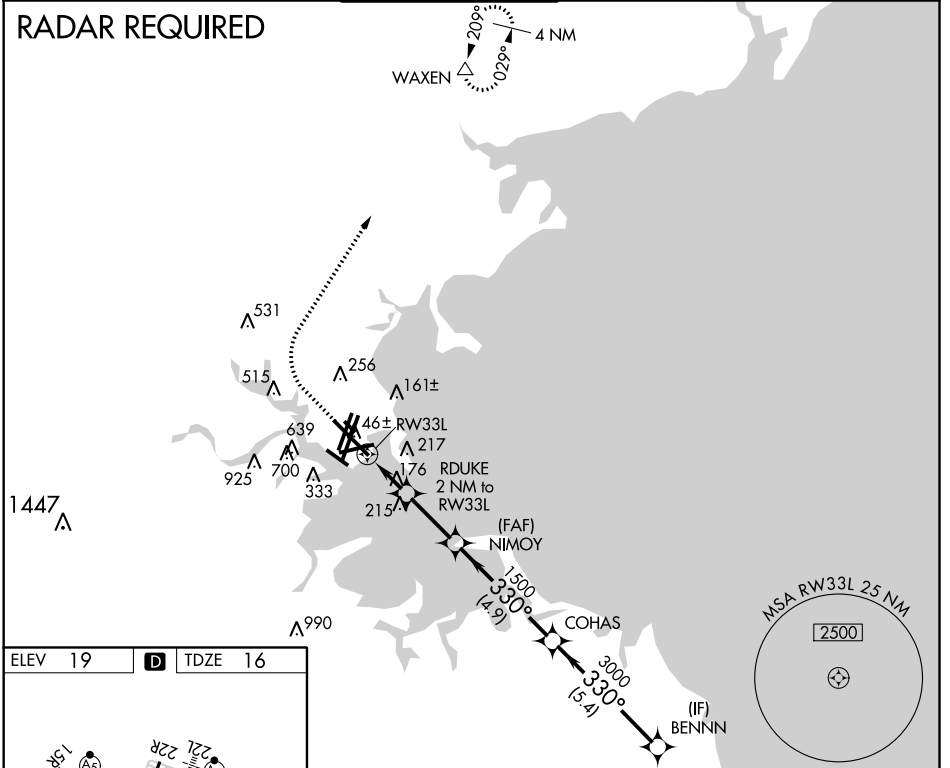
# RNAV (GPS) RWY 33L

GENERAL EDWARD LAWRENCE LOGAN INTL (BOS)

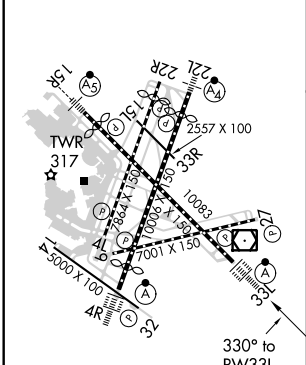
<b>⚠</b> DME/DME RNP-0.3 NA. Circling NA to Rwy 14. Circling NA for Cats C and D west of Rws 4L and 15R. For uncompensated Baro-VNAV systems, LNAV/VNAV NA below -14°C (7°F) or above 54°C (130°F).	ALSF-2	MISSED APPROACH: Climb to 600 then climbing right turn to 3000 direct WAXEN and hold.
---	--------	---

D-ATIS <b>135.0</b>	BOSTON APP CON <b>120.6 263.1</b>	BOSTON TOWER <b>128.8 257.8 (WEST)</b> <b>132.225 257.8 (EAST)</b>	GND CON <b>121.9 121.75</b>	CLNC DEL <b>121.65 257.8</b>	CPDLC
------------------------	--------------------------------------	--	--------------------------------	---------------------------------	-------

## RADAR REQUIRED



ELEV 19	<b>D</b>	TDZE 16
---------	----------	---------



TDZ/CL Rws 4R, 15R and 33L  
REIL Rws 4L, 27 and 32  
MIRL Rwy 15L-33R  
HIRL Rws 4L-22R, 4R-22L, 9-27, 14-32 and 15R-33L

600	3000	WAXEN	VGSI and RNAV glidepath not coincident (VGSI Angle 3.00/TCH 68).	BENNN
↑	↷	△		
*LNAV only		*1.1 NM to RDUKE RW33L	1500	4000
		*2 NM to RW33L	3000	
		*700	1500	GP 3.00° TCH 57
		1.1 NM	0.9 NM	2.5 NM
		4.9 NM	5.4 NM	

CATEGORY	A	B	C	D
LPV DA		216/18	200 (200-½)	
LNAV/VNAV DA		324/24	308 (400-½)	
LNAV MDA	440/24	424 (500-½)	440/40	424 (500-¾)
CIRCLING	960-1¼ 941 (1000-1¼)	1060-1½ 1041 (1100-1½)	640-1¾ 621 (700-1¾)	640-2 621 (700-2)

NE-1, 08 OCT 2020 to 05 NOV 2020

NE-1, 08 OCT 2020 to 05 NOV 2020