

LOC I-CHS 109.7	APP CRS 154°	Rwy Idg TDZE Apt Elev	9001 43 46
---------------------------	------------------------	-----------------------------	---------------------------------------

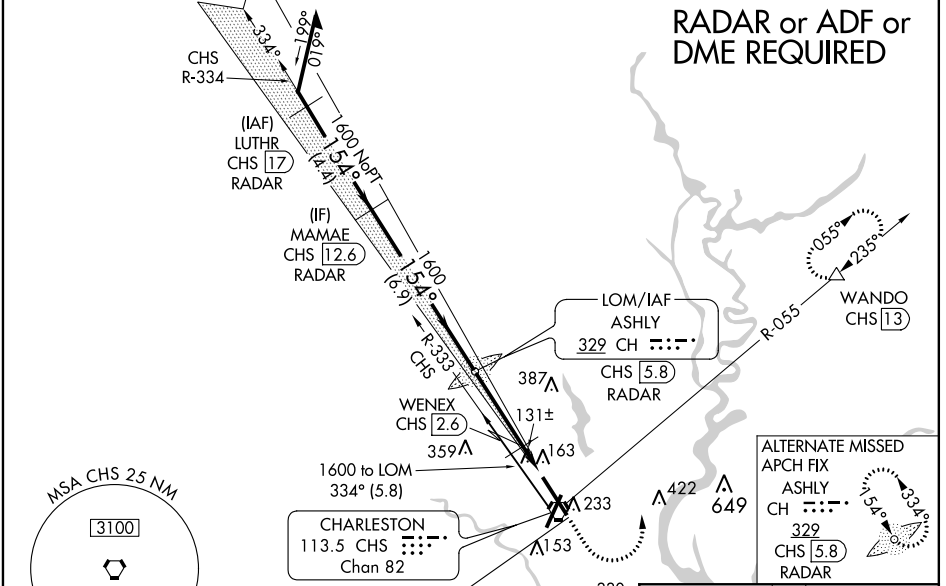
ILS or LOC RWY 15

CHARLESTON AFB/INTL (CHS)

⚠ For inoperative ALSF, increase S-ILS 15 Cat E visibility to RVR 4000 and S-LOC 15 Cats C/D/E visibility to 1½ miles. WENEX fix minimums: for inoperative ALSF, increase S-LOC 15 Cats C/D/E visibility to RVR 5500. DME required.
DME from CHS VORTAC.
DME from CHS VORTAC.
Simultaneous reception of I-CHS and CHS DME required.

ALSF-2
MISSED APPROACH: Climb to 500 then climbing left turn to 2000 on CHS VORTAC R-055 to WANDO/CHS 13 DME and hold.

ATIS 124.75	CHARLESTON APP CON 120.7 306.925	CHARLESTON TOWER 126.0 239.0	GND CON 121.9 348.6	CLNC DEL 127.325 291.65	CPDLC
-----------------------	--	--	-------------------------------	-----------------------------------	-------

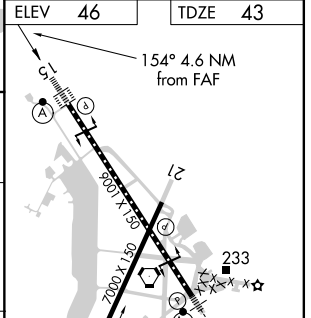
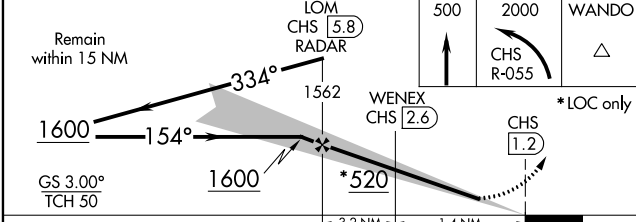


RADAR or ADF or DME REQUIRED

SE-2, 08 OCT 2020 to 05 NOV 2020

SE-2, 08 OCT 2020 to 05 NOV 2020

ELEV 46	TDZE 43
---------	---------



CATEGORY	A	B	C	D	E
S-ILS 15	243/18 200 (200-½)				
S-LOC 15	520/24	477 (500-½)	520/50		477 (500-1)
CIRCLING	540-1	494 (500-1)	540-1½ 494 (500-1½)	600-2 554 (600-2)	740-2½ 694 (700-2½)
# WENEX FIX MINIMUMS					
S-LOC 15	400/24	357 (400-½)	400/30		357 (400-¾)
CIRCLING	540-1	494 (500-1)	540-1½ 494 (500-1½)	600-2 554 (600-2)	740-2½ 694 (700-2½)

FAF to MAP 4.6 NM					
Knots	60	90	120	150	180
Min:Seq	4:36	3:04	2:18	1:50	1:32