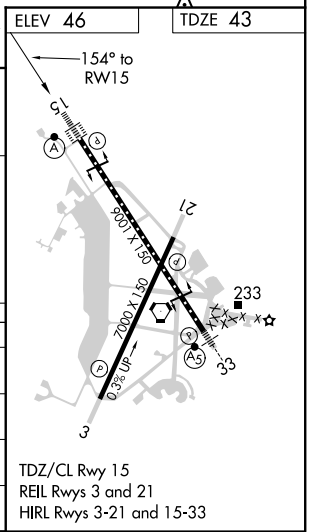
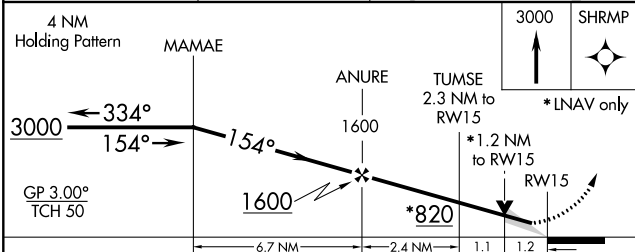
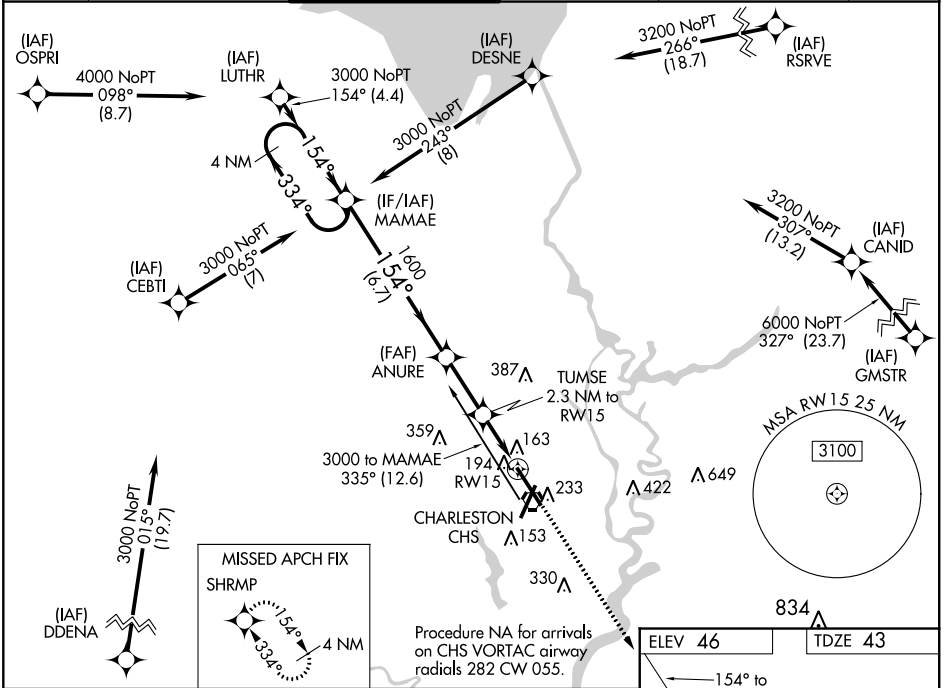


WAAS CH 93519 W15A	APP CRS 154°	Rwy Idg TDZE Apt Elev	9001 43 46
--	------------------------	-----------------------------	---------------------------------------

RNAV (GPS) Y RWY 15

CHARLESTON AFB/INTL (CHS)

For uncompensated Baro-VNAV systems, LNAV/VNAV NA below -15°C (5°F) or above 54°C (130°F). For inoperative ALSF, increase LNAV/VNAV all Cats visibility to 1¼ and LNAV Cats C/D visibility to RVR 6000. DME/DME RNP-0.3 NA.				ALSF-2 	MISSED APPROACH: Climb to 3000 direct SHRMP and hold.
ATIS 124.75	CHARLESTON APP CON 120.7 306.925	CHARLESTON TOWER 126.0 239.0	GND CON 121.9 348.6	CLNC DEL 127.325 291.65	CPDLC



SE-2, 08 OCT 2020 to 05 NOV 2020

SE-2, 08 OCT 2020 to 05 NOV 2020