

(SWPFX2.SWPFX) 18144

AL-76 (FAA)

CHARLESTON AFB/INTL (CHS)  
CHARLESTON, SOUTH CAROLINA

# SWPFX TWO DEPARTURE (RNAV)

ATIS  
124.75  
GND CON  
121.9 348.6  
CLNC DEL  
127.325 291.65  
CPDLC  
DEP CON  
119.3 379.925 (331°-150°)  
CHARLESTON TOWER  
126.0 239.0

**TOP ALTITUDE:  
4000**

### TAKEOFF MINIMUMS:

Rwys 15, 33: Standard.

Rwys 3, 21: Standard with minimum  
climb of 500' per NM  
to 560.

NOTE: Transponder code will be issued  
by Charleston clearance delivery.

NOTE: If unable to accept climb rate,  
advise ATC on initial contact.

NOTE: DME/DME/IRU or GPS Required.

NOTE: RNAV 1.

NOTE: Radar Required for non-GPS  
equipped aircraft.

NOTE: For non-GPS equipped aircraft: CHS  
and VAN DMEs must be operational  
for Takeoff Rwys 15, 21.

NOTE: Chart not to scale.

### DEPARTURE ROUTE DESCRIPTION

**TAKEOFF RWY 3:** Climb heading 031° to 560  
MSL, then direct PALLI, then on depicted route  
to SWPFX, thence. . . .

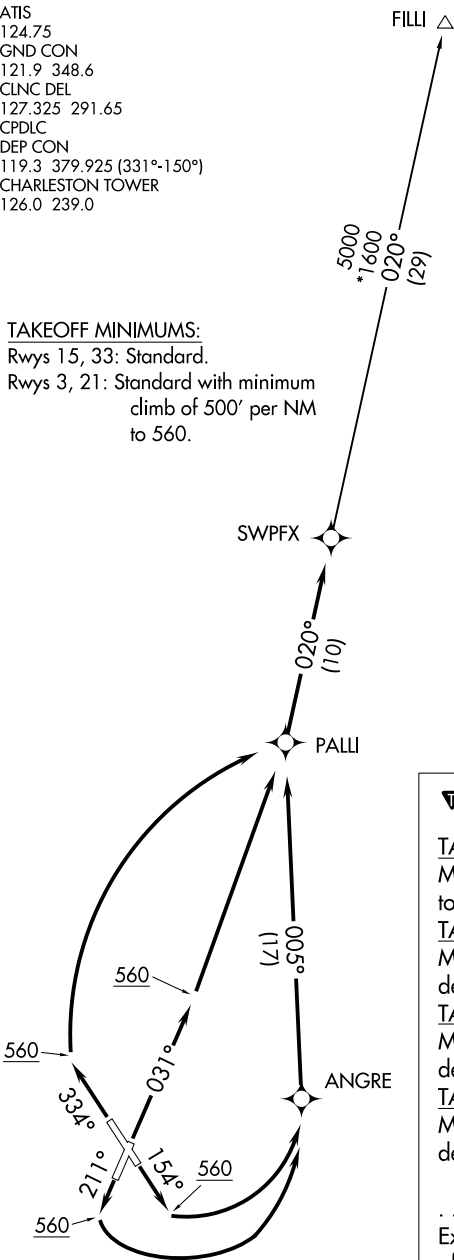
**TAKEOFF RWY 15:** Climb heading 154° to 560  
MSL, then left turn direct ANGRE, then on  
depicted route to SWPFX, thence. . . .

**TAKEOFF RWY 21:** Climb heading 211° to 560  
MSL, then left turn direct ANGRE, then on  
depicted route to SWPFX, thence. . . .

**TAKEOFF RWY 33:** Climb heading 334° to 560  
MSL, then right turn direct PALLI, then on  
depicted route to SWPFX, thence. . . .

. . . . on assigned transition, maintain 4000.  
Expect clearance to filed altitude 10 minutes  
after departure.

**FILLI TRANSITION (SWPFX2.FILLI):**



# SWPFX TWO DEPARTURE (RNAV)

(SWPFX2.SWPFX) 21JUL16

CHARLESTON, SOUTH CAROLINA  
CHARLESTON AFB/INTL (CHS)

SE-2, 08 OCT 2020 to 05 NOV 2020

SE-2, 08 OCT 2020 to 05 NOV 2020