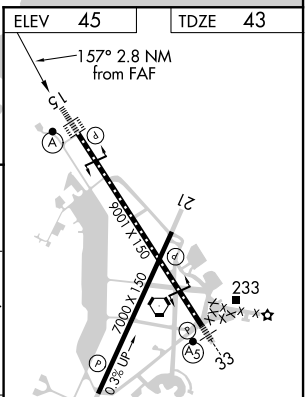
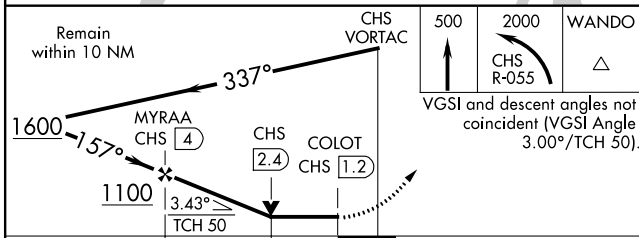
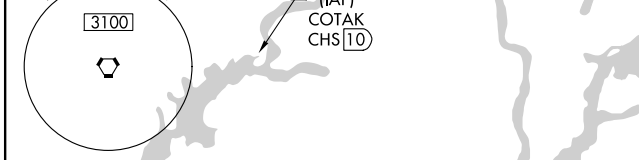
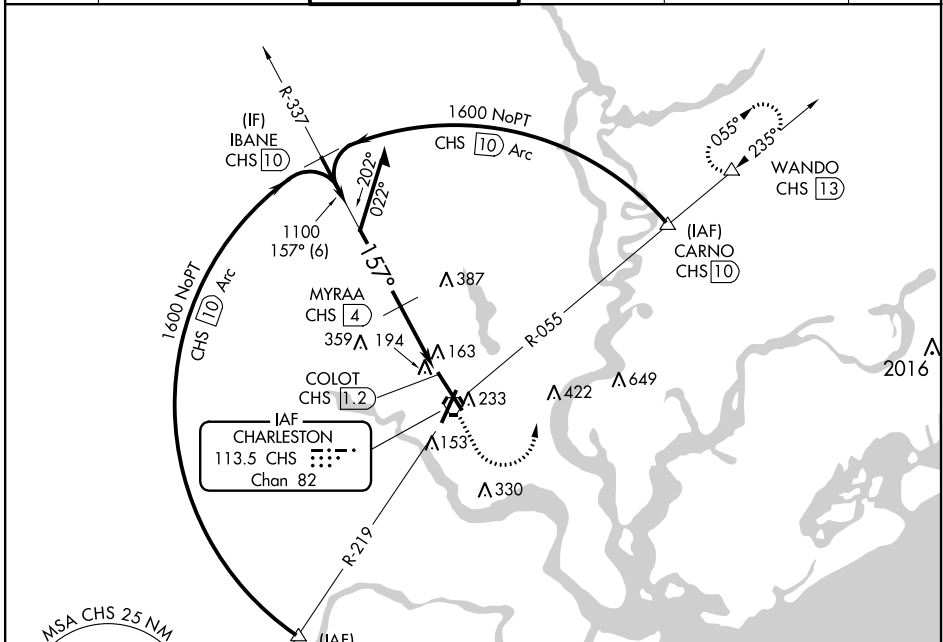


VORTAC CHS <b>113.5</b> Chan <b>82</b>	APP CRS <b>157°</b>	Rwy Idg TDZE <b>43</b> Apt Elev <b>45</b>	<b>9001</b>
--	------------------------	---	-------------

# VOR/DME or TACAN RWY 15

CHARLESTON AFB/INTL (CHS)

<p>For inoperative ALSF increase Cat A/B visibility to RVR 5000, Cat D visibility to RVR 6000.</p>	<p>ALSF-2</p>	<p>MISSED APPROACH: Climb to 500 then climbing left turn to 2000 on CHS R-055 to WANDO/CHS 13 DME and hold.</p>			
		<p>ATIS <b>124.75</b></p>	<p>CHARLESTON APP CON <b>120.7 306.925</b></p>	<p>CHARLESTON TOWER <b>126.0 239.0</b></p>	<p>GND CON <b>121.9 348.6</b></p>



CATEGORY	A	B	C	D
S-15	460/40 417 (500-¾)			460/50 417 (500-1)
CIRCLING	540-1 495 (500-1)		540-1½ 495 (500-1½)	600-2 555 (600-2)

TDZ/CL Rwy 15  
REIL Rws 3 and 21  
HIRL Rws 3-21 and 15-33

SE-2, 08 OCT 2020 to 05 NOV 2020

SE-2, 08 OCT 2020 to 05 NOV 2020