

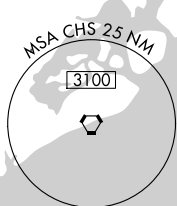
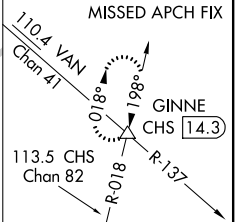
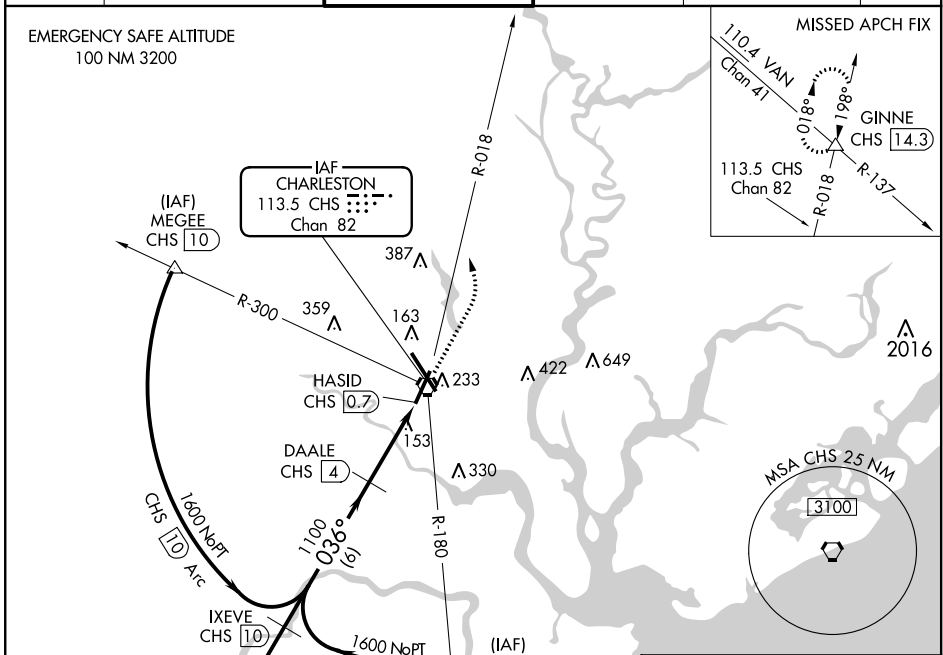
VORTAC CHS 113.5 Chan 82	APP CRS 036°	Rwy Idg 7000 TDZE 35 Apt Elev 46
--	------------------------	---

VOR/DME or TACAN RWY 3

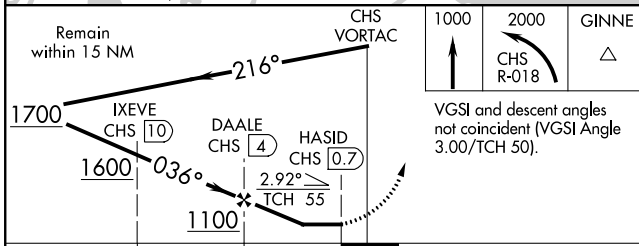
CHARLESTON AFB/INTL (CHS)

▽ ▲	MISSED APPROACH: Climb to 1000 then climbing left turn to 2000 via CHS R-018 to GINNE INT/CHS 14.3 DME and hold.				
ATIS 124.75	CHARLESTON APP CON 120.7 306.925	CHARLESTON TOWER 126.0 239.0	GND CON 121.9 348.6	CLNC DEL 127.325 291.65	CPDLC

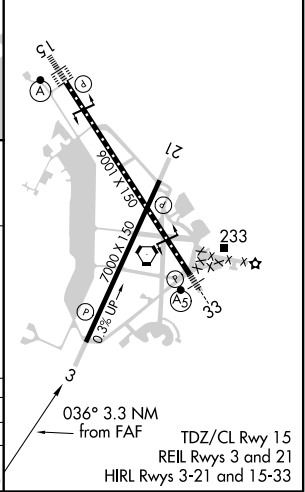
EMERGENCY SAFE ALTITUDE
100 NM 3200



ELEV 46	TDZE 35
---------	---------



CATEGORY	A	B	C	D	E
S-3	420-1	385 (400-1)	420-1 $\frac{1}{8}$	385 (400-1 $\frac{1}{8}$)	
CIRCLING	540-1	494 (500-1)	540-1 $\frac{1}{2}$	600-2	740-2 $\frac{1}{2}$
			494 (500-1 $\frac{1}{2}$)	554 (600-2)	694 (700-2 $\frac{1}{2}$)



VOR/DME or TACAN RWY 3

SE-2, 08 OCT 2020 to 05 NOV 2020

SE-2, 08 OCT 2020 to 05 NOV 2020

036° 3.3 NM from FAF
TDZ/CL Rwy 15
REIL Rws 3 and 21
HIRL Rws 3-21 and 15-33