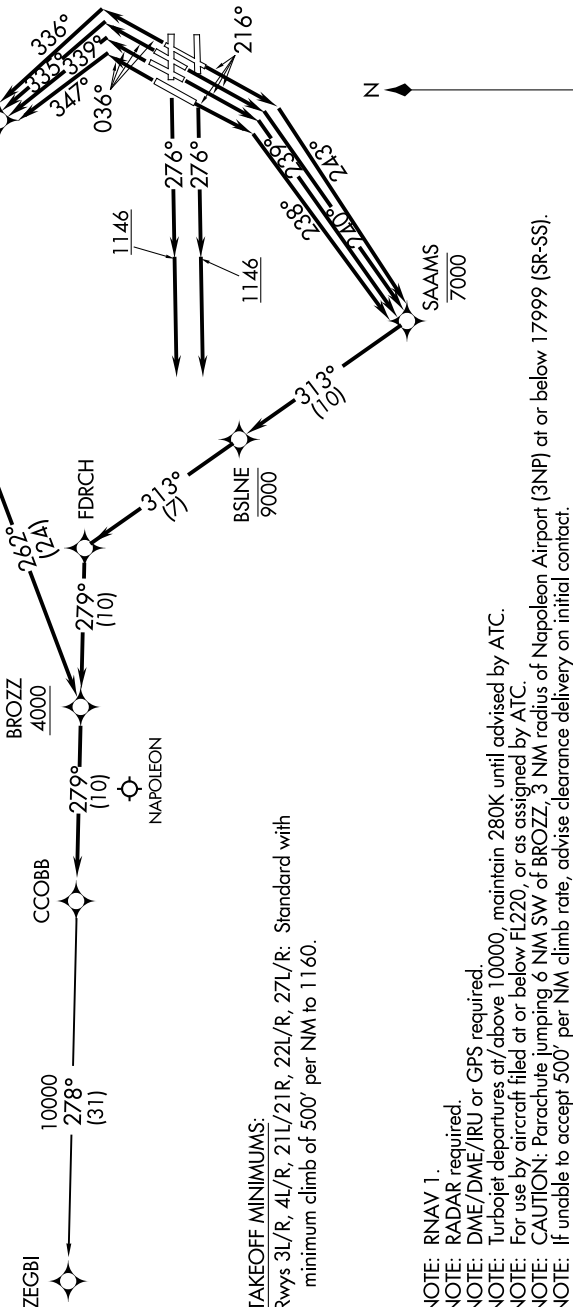


EC-1, 08 OCT 2020 to 05 NOV 2020

TOP ALTITUDE:  
17000

- D-ATIS 118.125
- CLNC DEL 120.65
- CPDIC
- GND CON
- 121.8 (NW) 119.45 (NE)
- 132.725 (SW) 119.25 (SE)
- METRO TOWER
- 118.4, 317.725 (Rwys 3L/R, 21L/R, 27R)
- 128.75, 317.725 (Rwy 27L)
- 135.0, 317.725 (Rwy 4L/R, 22L/R)
- DETROIT DEP CON
- 125.525 284.0 (Rwy 3L/R, 4L/R, 21L/R, 22L/R)
- 132.025 284.0 (Rwy 27L/R)



**TAKEOFF MINIMUMS:**  
 Rwys 3L/R, 4L/R, 21L/21R, 22L/R, 27L/R: Standard with  
 minimum climb of 500' per NM to 1160.

- NOTE: RNAV 1.
- NOTE: RADAR required.
- NOTE: DME/DME/IRU or GPS required.
- NOTE: Turbojet departures at/above 10000, maintain 280K until advised by ATC.
- NOTE: For use by aircraft filed at or below FL220, or as assigned by ATC.
- NOTE: CAUTION: Parachute jumping 6 NM SW of BROZZ, 3 NM radius of Napoleon Airport (3NP) at or below 17999 (SR-SS).
- NOTE: If unable to accept 500' per NM climb rate, advise clearance delivery on initial contact.

NOTE: Chart not to scale.

(NARRATIVE ON FOLLOWING PAGE)

EC-1, 08 OCT 2020 to 05 NOV 2020