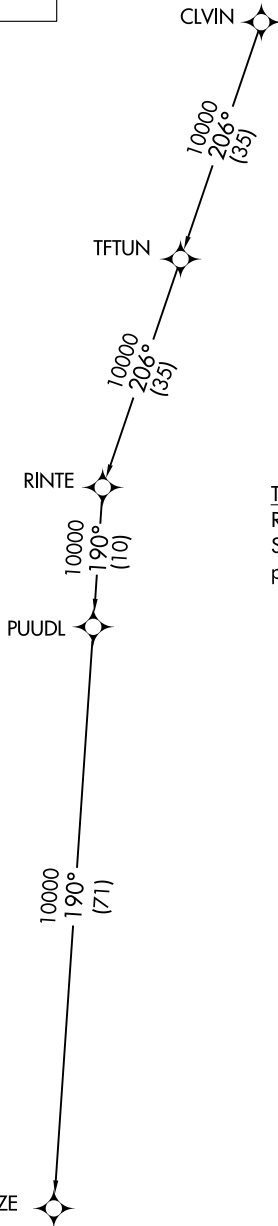


CLVIN TWO DEPARTURE (RNAV)

**TOP ALTITUDE:  
17000**

D-ATIS 118.125  
 CLNC DEL 120.65  
 CPDLC  
 GND CON  
 121.8 (NW) 119.45 (NE)  
 132.725 (SW) 119.25 (SE)  
 METRO TOWER  
 118.4 317.725 (Rwys 3L/R, 21L/R, 27R)  
 128.75 317.725 (Rwy 27L)  
 135.0 317.725 (Rwy 4L/R, 22L/R)  
 DETROIT DEP CON  
 125.525 284.0 (Rwys 22L/R, 4L/R)  
 132.025 284.0 (Rwys 21L/R, 3L/R, 27L/R)



**TAKEOFF MINIMUMS:**  
 Rwys 3L/R, 4L/R, 21L/R, 22L/R, 27L/R:  
 Standard with minimum climb of 500'  
 per NM to 1146.

NOTE: RNAV 1.  
 NOTE: RADAR required.  
 NOTE: DME/DME/IRU or GPS required.  
 NOTE: Turbojet departures at/above 10000,  
 maintain 280K until advised by ATC.  
 NOTE: If unable to accept 500' per NM climb rate,  
 advise clearance delivery on initial contact.

NOTE: Chart not to scale.

(NARRATIVE ON FOLLOWING PAGE)

EC-1, 08 OCT 2020 to 05 NOV 2020

EC-1, 08 OCT 2020 to 05 NOV 2020