

(CRAKN.CRAKN2) 19283

# CRAKN TWO ARRIVAL (RNAV)

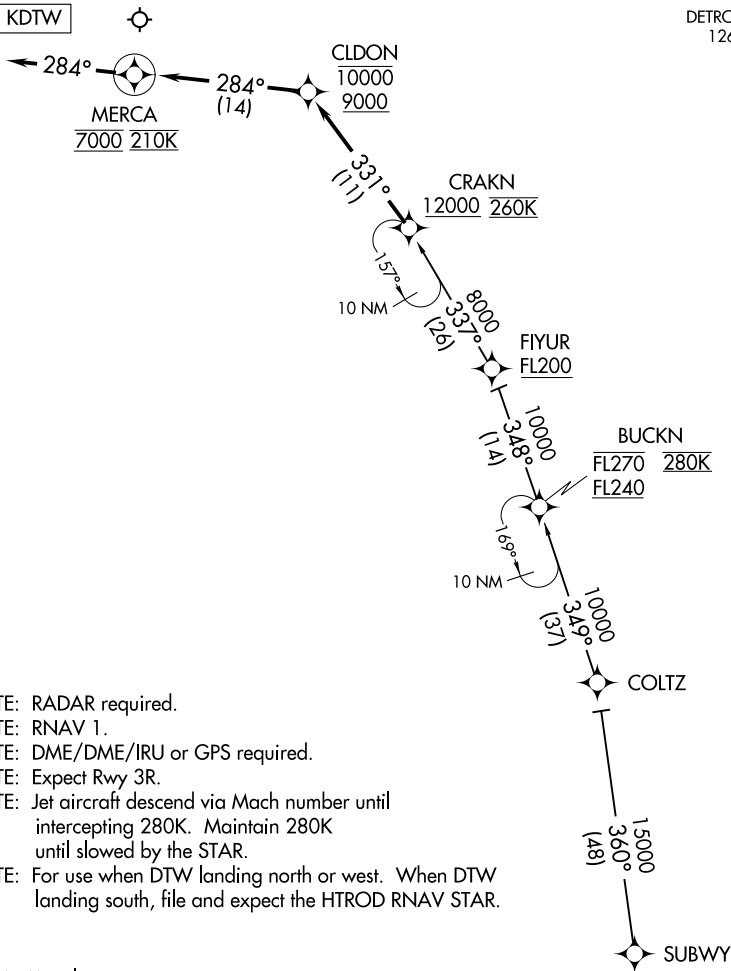
AL-119 (FAA)

DETROIT METROPOLITAN WAYNE COUNTY (DTW)

DETROIT, MICHIGAN

D-ATIS  
133.675  
DETROIT APP CON  
126.225 284.0

Ldg KDTW



- NOTE: RADAR required.
- NOTE: RNAV 1.
- NOTE: DME/DME/IRU or GPS required.
- NOTE: Expect Rwy 3R.
- NOTE: Jet aircraft descend via Mach number until intercepting 280K. Maintain 280K until slowed by the STAR.
- NOTE: For use when DTW landing north or west. When DTW landing south, file and expect the HTROD RNAV STAR.

NOTE: Chart not to scale.

## ARRIVAL ROUTE DESCRIPTION

### SUBWY TRANSITION (SUBWY.CRAKN2)

From CRAKN on track 331° to cross CLDON between 9000 and 10000, then on track 284° to cross MERCA at 7000 and at 210K, then on track 284°. Expect RADAR vectors to final approach course.

### LOST COMMUNICATIONS:

From MERCA, execute ILS Rwy 3R approach.

# CRAKN TWO ARRIVAL (RNAV)

(CRAKN.CRAKN2) 10OCT19

DETROIT, MICHIGAN

DETROIT METROPOLITAN WAYNE COUNTY (DTW)

EC-1, 08 OCT 2020 to 05 NOV 2020

EC-1, 08 OCT 2020 to 05 NOV 2020