

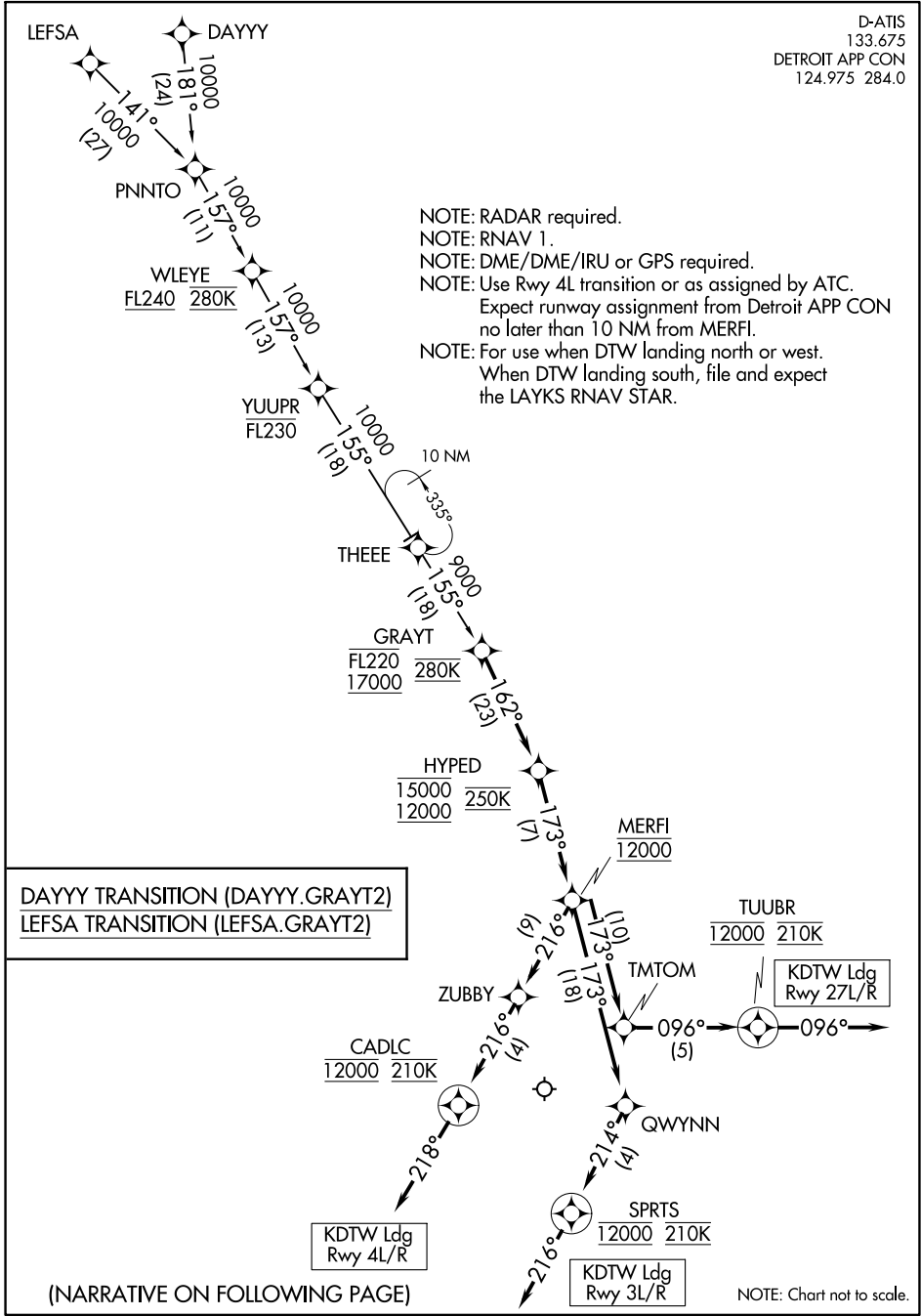
# GRAYT TWO ARRIVAL (RNAV)

DETROIT METROPOLITAN WAYNE COUNTY (DTW)

DETROIT, MICHIGAN

D-ATIS  
133.675  
DETROIT APP CON  
124.975 284.0

- NOTE: RADAR required.
- NOTE: RNAV 1.
- NOTE: DME/DME/IRU or GPS required.
- NOTE: Use Rwy 4L transition or as assigned by ATC.  
Expect runway assignment from Detroit APP CON no later than 10 NM from MERFI.
- NOTE: For use when DTW landing north or west.  
When DTW landing south, file and expect the LAYKS RNAV STAR.



DAYYY TRANSITION (DAYYY.GRAYT2)  
LEFSA TRANSITION (LEFSA.GRAYT2)

(NARRATIVE ON FOLLOWING PAGE)

NOTE: Chart not to scale.

# GRAYT TWO ARRIVAL (RNAV)

(GRAYT.GRAYT2) 10OCT19

DETROIT, MICHIGAN  
DETROIT METROPOLITAN WAYNE COUNTY (DTW)

EC-1, 08 OCT 2020 to 05 NOV 2020

EC-1, 08 OCT 2020 to 05 NOV 2020