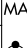


LOC/DME I-EJR 111.5 Chan 52	APP CRS 216°	Rwy Idg TDZE 632 Apt Elev 645	10001
---	------------------------	---	--------------

ILS RWY 21L (SA CAT I & II)

DETROIT METROPOLITAN WAYNE COUNTY (DTW)

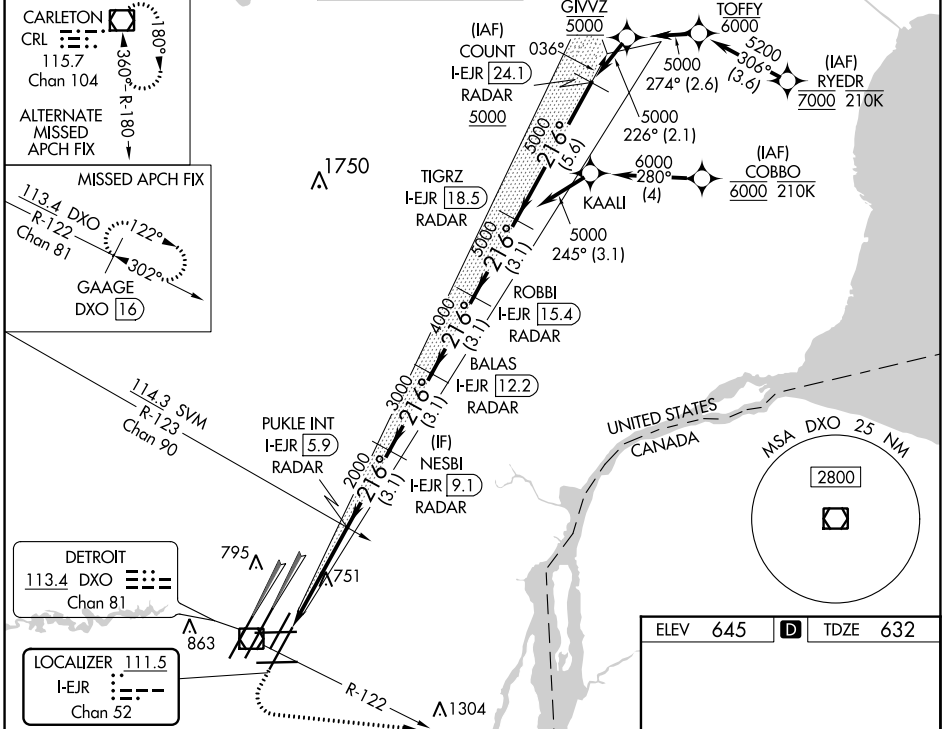
From RYEDR, COBBO: RNAV 1-DME/DME/IRU or GPS required. Aircraft not DME/DME/IRU or GPS equipped - RADAR required for procedure entry. DME or RADAR required.

MALSRS 

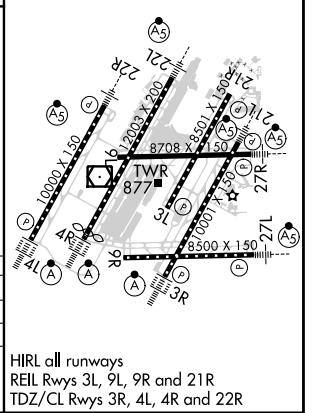
MISSED APPROACH: Climb to 1100 then climbing left turn to 4000 on DXO R-122 to GAAGE/DXO 16 DME and hold, continue climb-in-hold to 4000.

Simultaneous approach authorized. SA CAT I: Requires specific OPSPEC, MSPEC, or LOA approval and use of HUD to DH. SA CAT II: Reduced lighting; requires specific OPSPEC, MSPEC, or LOA approval and use of autoland or HUD to touchdown.

D-ATIS 133.675	DETROIT APP CON 125.15 284.0	METRO TOWER 118.4 317.725	GND CON 121.8 (NW) 119.45 (NE) 132.725 (SW) 119.25 (SE)	CLNC DEL 120.65	CPDLC
--------------------------	--	-------------------------------------	---	---------------------------	-------



ELEV 645	D	TDZE 632								
1100	4000	DXO R-122	GAAGE DXO 16	NESBI I-EJR 9.1 RADAR	BALAS I-EJR 12.2 RADAR	ROBBIE I-EJR 15.4 RADAR	TIGRZ I-EJR 18.5 RADAR	216° 5000		
↑		↙		↘		↘		GS 3.00° TCH 55		
1189		4.1 NM		3.1 NM		3.1 NM		3.1 NM		
CATEGORY	A	B	C	D						
S-ILS 21L	SA CAT I				RA 148/14	150	DA 782			
S-ILS 21L	SA CAT II				RA 98/12	100	DA 732			
SA CATEGORY I & II ILS - SPECIAL AIRCREW & AIRCRAFT CERTIFICATION REQUIRED										



EC-1, 08 OCT 2020 to 05 NOV 2020

EC-1, 08 OCT 2020 to 05 NOV 2020