

LOC/DME I-DWC 110.7 Chan 44	APP CRS 216°	Rwy Idg TDZE Apt Elev 12003 637 645
---	------------------------	---

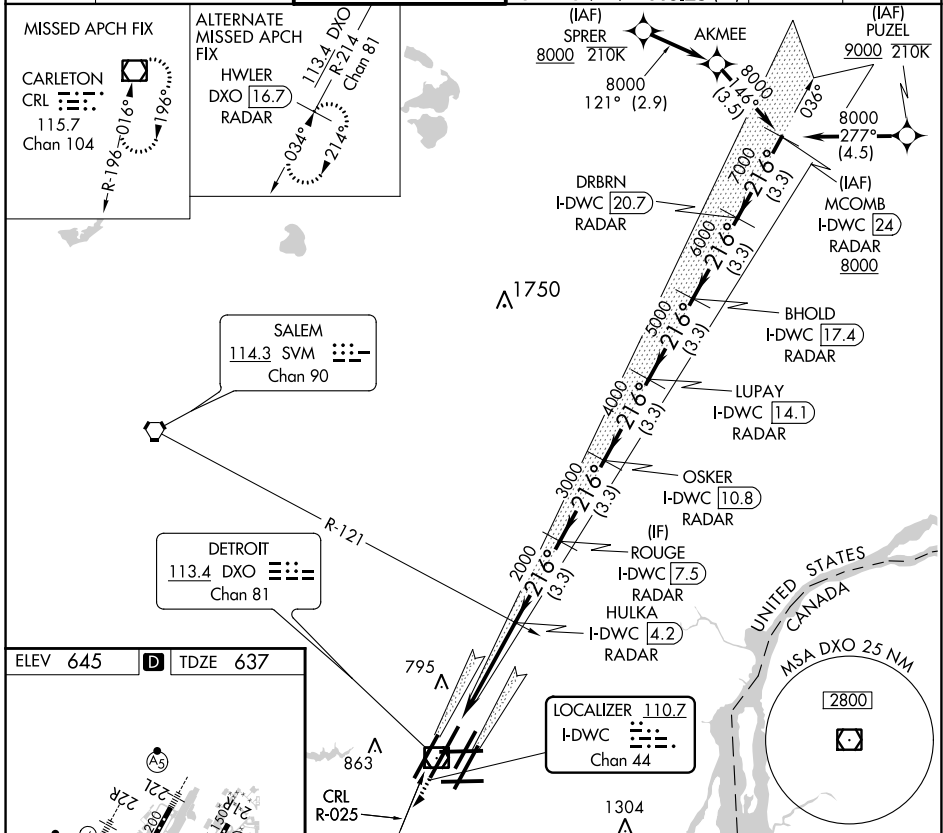
ILS RWY 22L (SA CAT I)
DETROIT METROPOLITAN WAYNE COUNTY (DTW)

DME or RADAR required. RNAV 1-DME/DME/IRU or RADAR required for procedure entry.

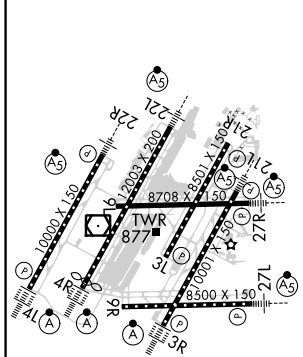
Simultaneous approach authorized.
Requires specific OPSPEC, MSPEC, or LOA approval and use of HUD to DH.

MALS R (AS) MISSED APPROACH: Climb to 4000 on heading 216° and CRL VOR/DME R-025 to CRL VOR/DME and hold, continue climb-in-hold to 4000.

D-ATIS 133.675	DETROIT APP CON 124.05 284.0	METRO TOWER 128.125 317.725	GND CON 121.8 (NW) 132.725 (SW)	119.45 (NE) 119.25 (SE)	CLNC DEL 120.65	CPDLC
--------------------------	--	---------------------------------------	---	--	---------------------------	-------



ELEV 645	D	TDZE 637
----------	----------	----------



4000	CRL R-025	CRL	OSKER I-DWC [10.8] RADAR	LUPAY I-DWC [14.1] RADAR	BHOLD I-DWC [17.4] RADAR	DRBRN I-DWC [20.7] RADAR	MCOMB I-DWC [24] RADAR
3000	HULKA I-DWC [4.2] RADAR	ROUGE I-DWC [7.5] RADAR	OSKER I-DWC [10.8] RADAR	LUPAY I-DWC [14.1] RADAR	BHOLD I-DWC [17.4] RADAR	DRBRN I-DWC [20.7] RADAR	MCOMB I-DWC [24] RADAR
2000	HULKA I-DWC [4.2] RADAR	ROUGE I-DWC [7.5] RADAR	OSKER I-DWC [10.8] RADAR	LUPAY I-DWC [14.1] RADAR	BHOLD I-DWC [17.4] RADAR	DRBRN I-DWC [20.7] RADAR	MCOMB I-DWC [24] RADAR
1304	ANTENNA	2000	3000	4000	5000	6000	7000
11201	4.3 NM	3.3 NM	3.3 NM	3.3 NM	3.3 NM	3.3 NM	3.3 NM
CATEGORY	A	B	C	D			
S-ILS 22L	SA CAT I		RA 148/14	150 DA 787			

SA CATEGORY I ILS- SPECIAL AIRCREW & AIRCRAFT CERTIFICATION REQUIRED

EC-1, 08 OCT 2020 to 05 NOV 2020

EC-1, 08 OCT 2020 to 05 NOV 2020