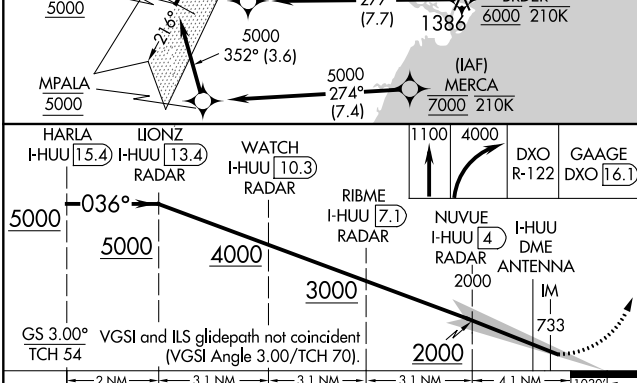
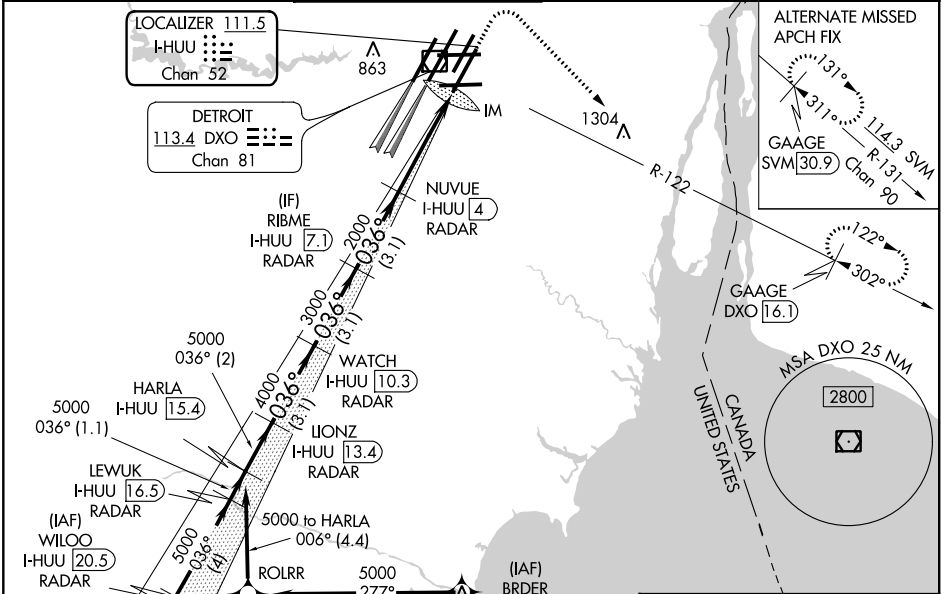


LOC/DME I-HUU	APP CRS	Rwy Idg	10001
111.5	036°	TDZE	633
Chan 52		Apt Elev	645

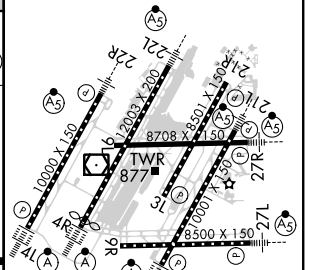
ILS RWY 3R (CAT II & III)
DETROIT METROPOLITAN WAYNE COUNTY (DTW)

RNAV 1-GPS.		ALSF-2 	MISSED APPROACH: Climb to 1100 then climbing right turn to 4000 on DXO VOR/DME R-122 to GAAGE/DXO 16.1 DME and hold.
MERC A and BRDER: RNAV 1-DME/DME/IRU or GPS required. Aircraft not DME/DME/IRU or GPS equipped - RADAR required for procedure entry.			
Simultaneous approach authorized. DME required. RVR 1000 authorized with specific OPSPEC, MSPEC, or LOA approval and use of autoland or HUD to touchdown.			

D-ATIS 133.675	DETROIT APP CON 125.15 284.0	METRO TOWER 118.4 317.725	GND CON 121.8 (NW) 119.45 (NE) 132.725 (SW) 119.25 (SE)	CLNC DEL 120.65	CPDLC
--------------------------	--	-------------------------------------	---	---------------------------	-------



ELEV 645	D TDZE 633
HIRL all runways	
REIL Rwy 3L, 9L, 9R and 21R	
TDZ/CL Rwy 3R, 4L, 4R and 22R	



CATEGORY	A	B	C	D
S-ILS 3R	CAT II RA 101/12 100 DA 733			
S-ILS 3R	CAT III RVR 06			
CATEGORY II & III ILS - SPECIAL AIRCREW & AIRCRAFT CERTIFICATION REQUIRED				

EC-1, 08 OCT 2020 to 05 NOV 2020

EC-1, 08 OCT 2020 to 05 NOV 2020