

LOC/DME I-EJR 111.5 Chan 52	APP CRS 216°	Rwy Idg TDZE Apt Elev	10001 632 645
---	------------------------	-----------------------------	--

ILS or LOC RWY 21L

DETROIT METROPOLITAN WAYNE COUNTY (DTW)

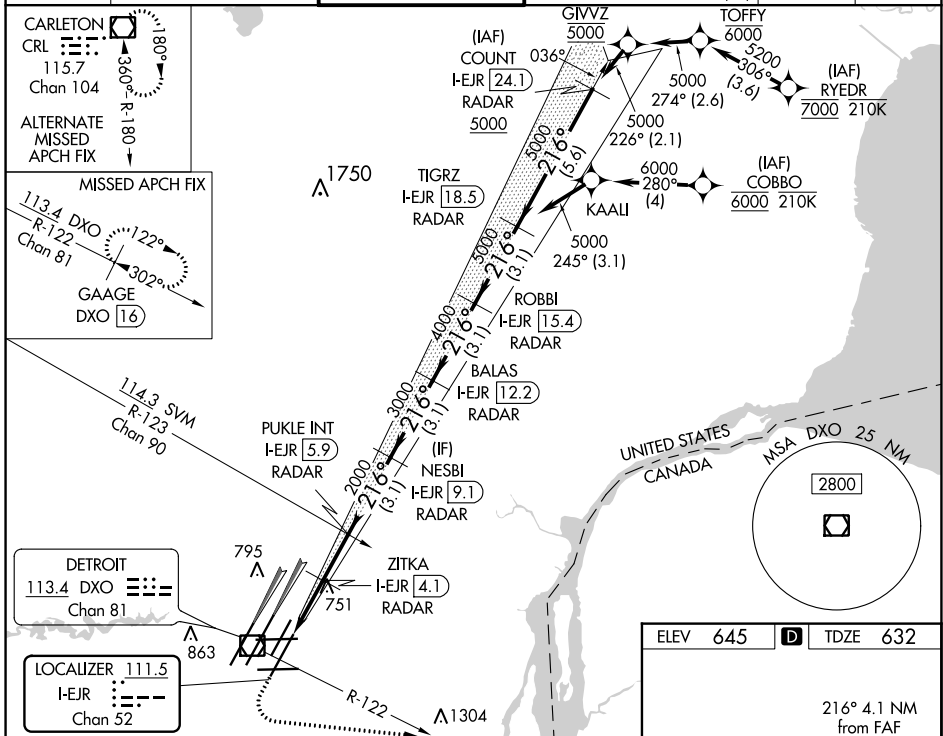
From RYEDR, COBBO: RNAV 1-DME/DME/IRU or GPS required. Aircraft not DME/DME/IRU or GPS equipped - RADAR required for procedure entry. DME or RADAR required.



MISSED APPROACH: Climb to 1100 then climbing left turn to 4000 on DXO R-122 to GAAGE/DXO 16 DME and hold, continue climb-in-hold to 4000.

Simultaneous approach authorized. **RVR 1800 authorized with use of FD or AP or HUD to DA.

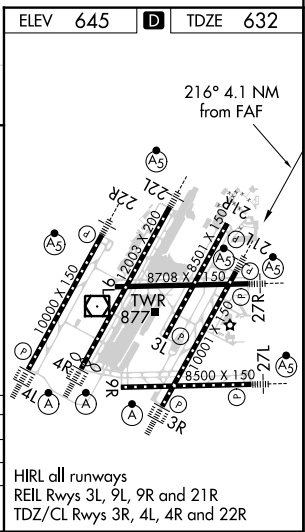
D-ATIS 133.675	DETROIT APP CON 125.15 284.0	METRO TOWER 118.4 317.725	GND CON 121.8 (NW) 119.45 (NE) 132.725 (SW) 119.25 (SE)	CLNC DEL 120.65	CPDLC
--------------------------	--	-------------------------------------	---	---------------------------	-------



EC-1, 08 OCT 2020 to 05 NOV 2020

EC-1, 08 OCT 2020 to 05 NOV 2020

1100	4000	DXO R-122	GAAGE DXO 16	VGSI and ILS glidepath not coincident (VGSI Angle 3.00/TCH 80).			
*LOC only		ZITKA I-EJR 4.1	PUKLE INT I-EJR 5.9	NESBI I-EJR 9.1	BALAS I-EJR 12.2	ROBBI I-EJR 15.4	TIGRZ I-EJR 18.5
*I-EJR 1.8		I-EJR 2.8	I-EJR 4.1	I-EJR 5.9	I-EJR 9.1	I-EJR 12.2	I-EJR 15.4
1 NM		1.3 NM	1.8 NM	3.1 NM	3.1 NM	3.1 NM	3.1 NM
CATEGORY	A	B	C	D			
S-ILS 21L **	832/24						
S-LOC 21L	1020/24	388 (400-½)	1020/35	388 (400-¾)			
☐ CIRCLING	1180-1	535 (600-1)	1180-½	535 (600-½)	1240-2	595 (600-2)	



HIRL all runways
REIL Rwy's 3L, 9L, 9R and 21R
TDZ/CL Rwy's 3R, 4L, 4R and 22R