

# ILS PRM RWY 22L (CLOSE PARALLEL)

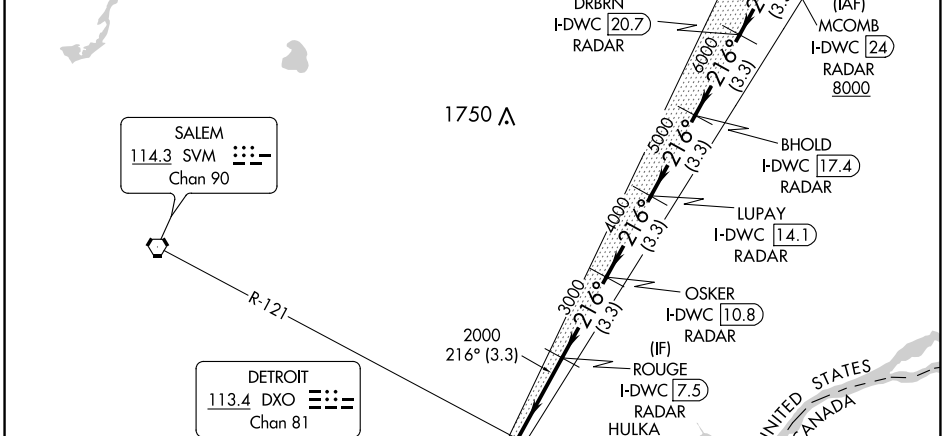
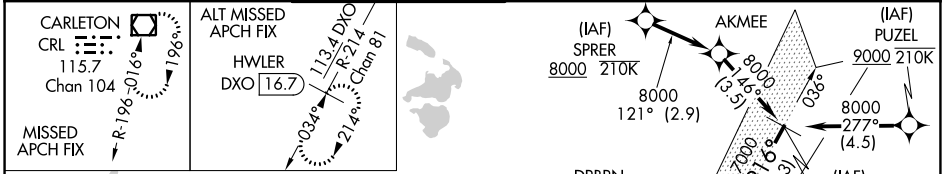
DETROIT METROPOLITAN WAYNE COUNTY (DTW)

LOC/DME I-DWC <b>110.7</b> Chan <b>44</b>	APP CRS <b>216°</b>	Rwy Idg TDZE Apt Elev	<b>12003</b> <b>637</b> <b>645</b>
---	------------------------	-----------------------------	--

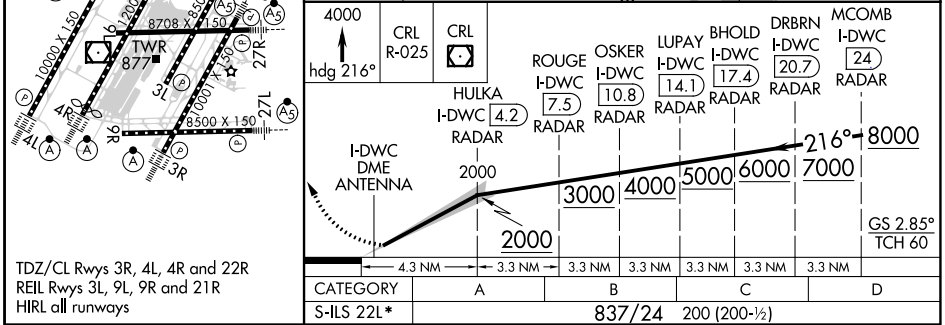
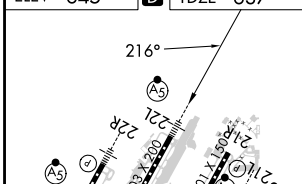
RNAV 1-GPS.  
 RNAV 1-DME/DME/IRU or RADAR required for procedure entry. DME or RADAR required.  
 Simultaneous approach authorized. Use of FD or AP required during simultaneous operations. Dual VHF comm required. See additional requirements on AAUP.  
 Procedure NA when glide slope not available.  
 \*RVR 1800 authorized with use of FD or AP or HUD to DA.

MALS R  
 MISSED APPROACH:  
 Climb to 4000 on heading 216° and CRL VOR/DME R-025 to CRL VOR/DME and hold, continue climb-in-hold to 4000.

D-ATIS <b>133.675</b>	DETROIT APP CON <b>124.05 284.0</b>	METRO TOWER <b>128.125 317.725</b> <b>PRM 135.775</b>	GND CON <b>121.8</b> (NW) <b>132.725</b> (SW)	<b>119.45</b> (NE) <b>119.25</b> (SE)	CLNC DEL <b>120.65</b>	CPDLC
--------------------------	--	---	---	--	---------------------------	-------



ELEV 645	TDZE 637
----------	----------



TDZ/CL Rwy 3R, 4L, 4R and 22R REIL Rwy 3L, 9L, 9R and 21R HIRL all runways	42°13'N-83°21'W	DETROIT METROPOLITAN WAYNE COUNTY (DTW) ILS PRM RWY 22L (CLOSE PARALLEL)
--	-----------------	---

EC-1, 08 OCT 2020 to 05 NOV 2020

EC-1, 08 OCT 2020 to 05 NOV 2020