

LOC/DME I-JKI <b>111.95</b>	APP CRS <b>216°</b>	Rwy Idg TDZE Apt Elev	<b>10000</b> <b>642</b> <b>645</b>
Chan <b>56 (Y)</b>			

# ILS PRM Z RWY 22R (CLOSE PARALLEL)

DETROIT METROPOLITAN WAYNE COUNTY (DTW)

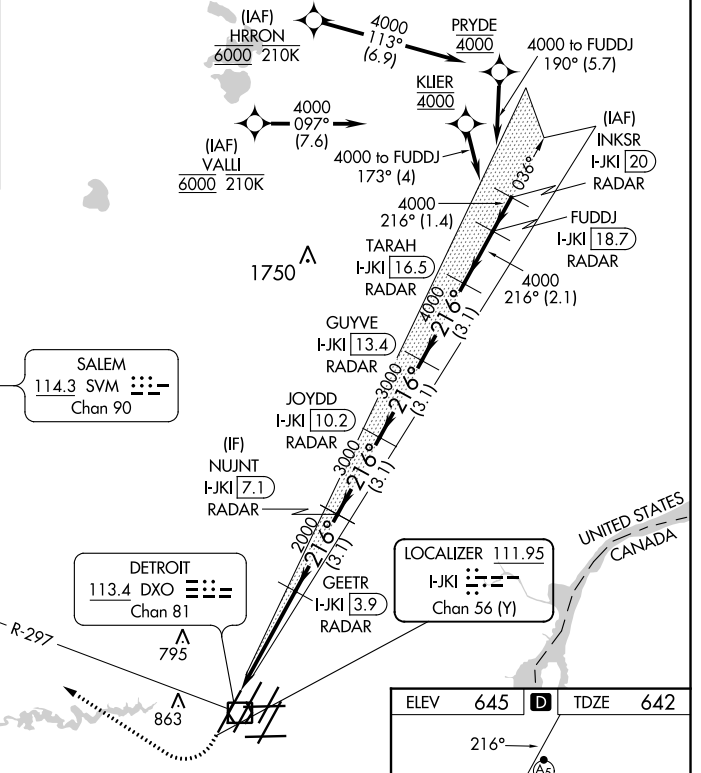
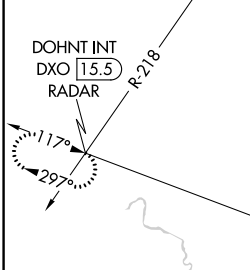
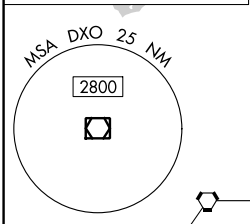
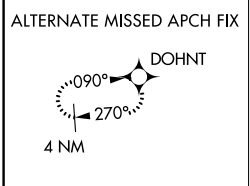
RNAV 1-GPS. HRRON and VALLI. RNAV 1-DME/DME/IRU or GPS required.  
 Aircraft not DME/DME/IRU or GPS equipped - RADAR required for procedure entry.

Simultaneous approach authorized. Use of FD or AP required during simultaneous operations. Dual VHF Comm required. See additional requirements on AAPP.  
 \*RVR 1800 authorized with use of FD or AP or HUD to DA.

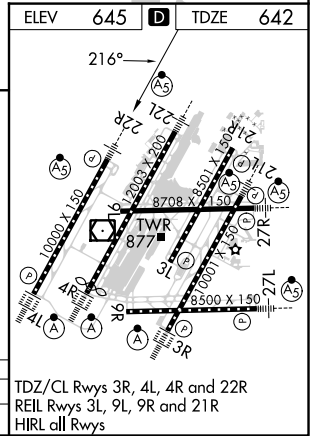


MISSED APPROACH: Climb to 1100 then climbing right turn to 4000 on DXO VOR/DME R-297 to DOHNT INT/DXO 15.5 DME/RADAR and hold.

D-ATIS <b>133.675</b>	DETROIT APP CON <b>124.05 284.0</b>	METRO TOWER <b>135.0 317.725</b> <b>PRM 127.05</b>	GND CON <b>121.8 (NW) 119.45 (NE)</b> <b>132.725 (SW) 119.25 (SE)</b>	CLNC DEL <b>120.65</b>	CPDLC
--------------------------	--	--	---	---------------------------	-------



1100	4000	DXO R-297	DOHNT INT	VGSi and ILS glidepath not coincident (VGSi Angle 3.00/TCH 71).				
I-JKI DME ANTENNA		GEETR I-JKI 3.9 RADAR	NUJNT I-JKI 7.1 RADAR	JOYDD I-JKI 10.2 RADAR	GUYVE I-JKI 13.4 RADAR	TARA I-JKI 16.5 RADAR	FUDDJ I-JKI 18.7 RADAR	
2000		3000	3000	4000	4000	4000	4000	GS 3.00° TCH 55
4.1 NM		3.1 NM	3.1 NM	3.1 NM	3.1 NM	2.1 NM		
CATEGORY	A	B	C	D				
S-ILS 22R*	842/24		200 (200-1/2)					



EC-1, 08 OCT 2020 to 05 NOV 2020

EC-1, 08 OCT 2020 to 05 NOV 2020