

DETROIT, MICHIGAN

ILS PRM Z RWY 4L (CAT II & III)

(CLOSE PARALLEL)

DETROIT METROPOLITAN WAYNE COUNTY (DTW)

LOC/DME I-HJT 111.95 Chan 56 (Y)	APP CRS 036°	Rwy Idg TDZE Apt Elev	10000 645 645
--	------------------------	-----------------------------	--

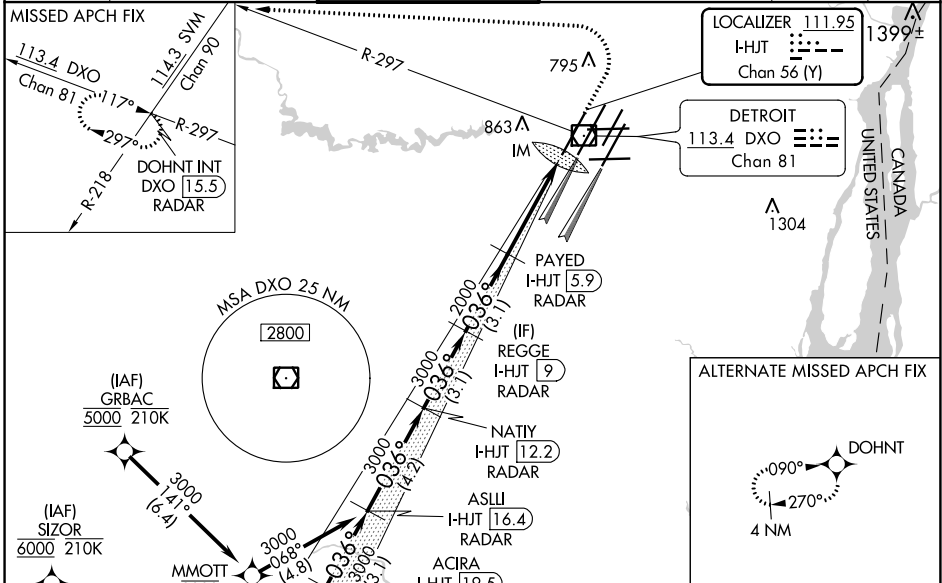
From GRBAC, SIZOR 1-DME/DME/IRU or GPS required. Aircraft not DME/DME/IRU or GPS equipped - RADAR required for procedure entry. DME or RADAR required.

MISSED APPROACH: Climb to 1100 then climbing left turn to 4000 on DXO VOR/DME R-297 to DOHNT INT/DXO 15.5 DME/RADAR and hold.

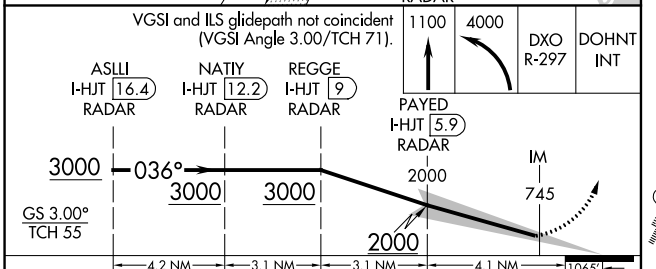
ALSF-2
A

⚠ Cat II: RVR 1000 authorized with specific OPSPEC, MSPEC, or LOA approval and use of autoland or HUD to touchdown. Simultaneous approach authorized. Use of FD or AP required during simultaneous operations. Dual VHF Comm required. See additional requirements on AAUP.

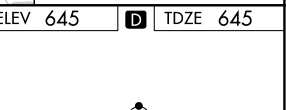
D-ATIS 133.675	DETROIT APP CON 124.05 284.0	METRO TOWER 135.0 317.725 PRM 127.05	GND CON 121.8 (NW) 119.45 (NE) 132.725 (SW) 119.25 (SE)	CLNC DEL 120.65	CPDLC
--------------------------	--	--	---	---------------------------	-------



ELEV 645	TDZE 645
----------	----------



CATEGORY	A	B	C	D
S-ILS 4L	CAT II RA 101/12 100 DA 745			
S-ILS 4L	CAT III RVR 06			



TDZ/CL Rwy 3R, 4L, 4R and 22R
REIL Rwy 3L, 9L, 9R and 21R
HIRL all runways

CATEGORY II & III ILS - SPECIAL AIRCREW & AIRCRAFT CERTIFICATION REQUIRED

DETROIT, MICHIGAN
Orig-B 30JAN20

42°13'N-83°21'W

DETROIT METROPOLITAN WAYNE COUNTY (DTW)

ILS PRM Z RWY 4L (CAT II & III) (CLOSE PARALLEL)

EC-1, 08 OCT 2020 to 05 NOV 2020

EC-1, 08 OCT 2020 to 05 NOV 2020