

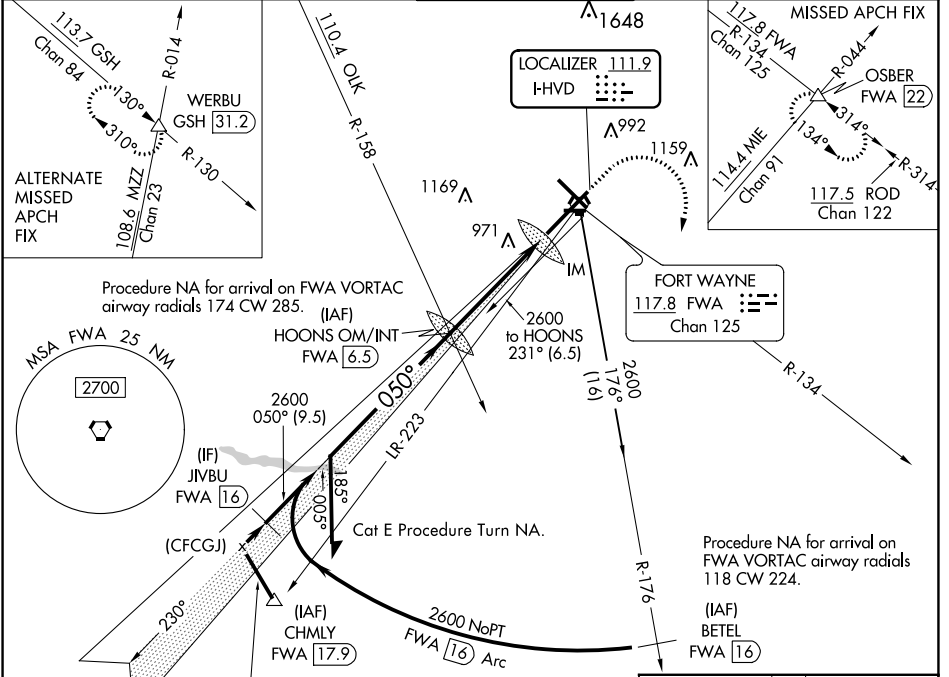
# ILS or LOC RWY 5

FORT WAYNE INTL (FWA)

LOC I-HVD <b>111.9</b>	APP CRS <b>050°</b>	Rwy ldg <b>11981</b>
		TDZE <b>815</b>
		Apt Elev <b>815</b>

<b>▼</b> For inop ALS, increase S-ILS 5 Cat E visibility to RVR 4000 and S-LOC 5 Cat C/D/E visibility to 1½ SM.	<b>ALSF-2</b> 	<b>MISSED APPROACH:</b> Climb to 1300 then climbing right turn to 3000 on FWA R-134 to OSBER INT/FWA 22 DME and hold.
---	-------------------	---

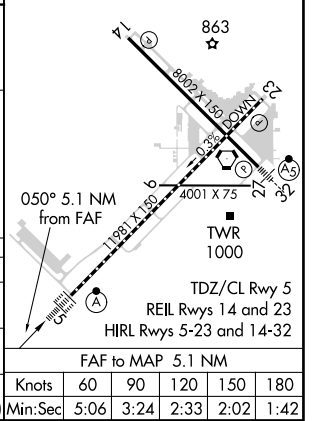
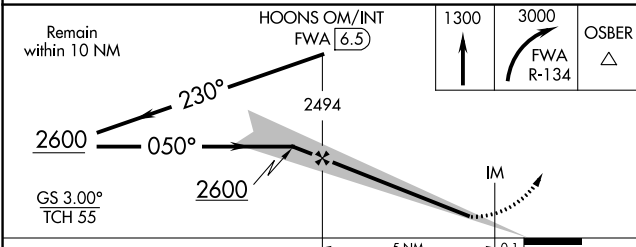
ATIS <b>121.25 360.825</b>	FORT WAYNE APP CON <b>127.2 284.6</b>	FORT WAYNE TOWER <b>119.1 269.325</b>	GND CON <b>121.9 348.6</b>	CLNC DEL <b>124.75</b>
-------------------------------	--	--	-------------------------------	---------------------------



EC-2, 08 OCT 2020 to 05 NOV 2020

EC-2, 08 OCT 2020 to 05 NOV 2020

ELEV	<b>815</b>	<b>D</b>	TDZE	<b>815</b>
------	------------	----------	------	------------



CATEGORY	A	B	C	D	E
S-ILS 5	1015/18		200 (200-½)		1015/24 200 (200-½)
S-LOC 5	1300/24	485 (500-½)	1300/50		485 (500-1)
<b>C</b> CIRCLING	1300-1	485 (500-1)	1420-1¾ 605 (700-1¾)	1520-2¼ 705 (800-2¼)	1520-2½ 705 (800-2½)

FAF to MAP 5.1 NM					
Knots	60	90	120	150	180
Min:Sec	5:06	3:24	2:33	2:02	1:42