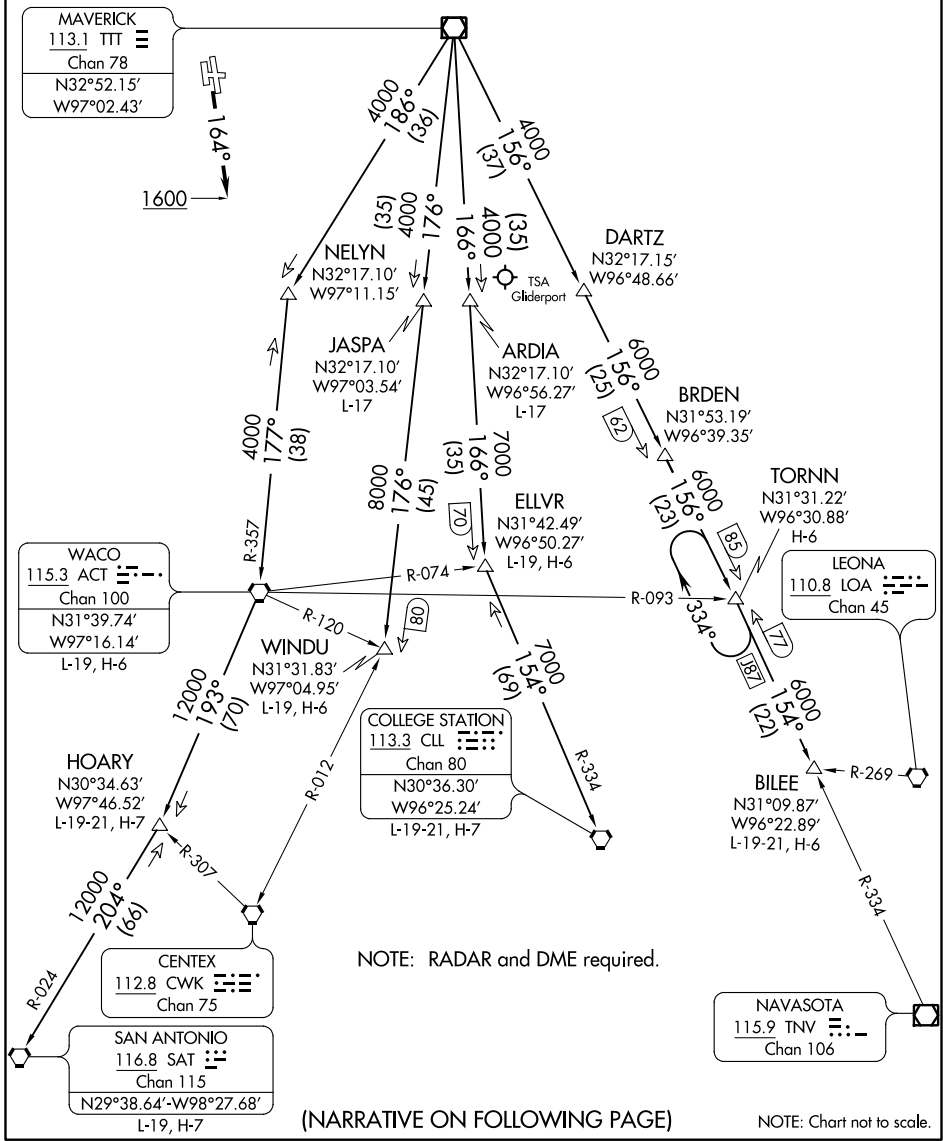


JOE POOL ONE DEPARTURE

ATIS
120.7
CLNC DEL
124.65
GND CON
121.9
MEACHAM TOWER
118.3 257.8
REGIONAL DEP CON
118.1 306.95 (NORTH)
135.975 379.9 (SOUTH)

TAKEOFF MINIMUMS
Rwys 16, 17: Standard.
Rwy 34: 300-2 or standard with minimum climb of 220' per NM to 1100, or alternatively, with standard takeoff minimums and a normal 200' per NM climb gradient, takeoff must occur no later than 1800' prior to DER.
Rwy 35: 300-1½ or standard with minimum climb of 205' per NM to 900, or alternatively, with standard takeoff minimums and a normal 200' per NM climb gradient, takeoff must occur no later than 1200' prior to DER.



SC-2, 08 OCT 2020 to 05 NOV 2020

SC-2, 08 OCT 2020 to 05 NOV 2020